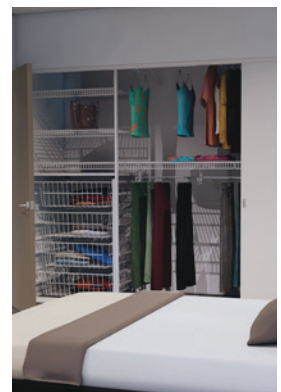
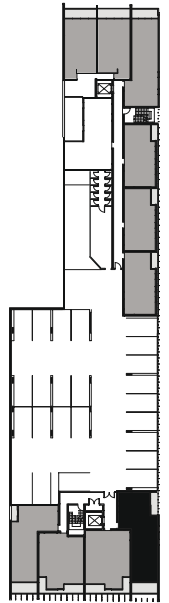
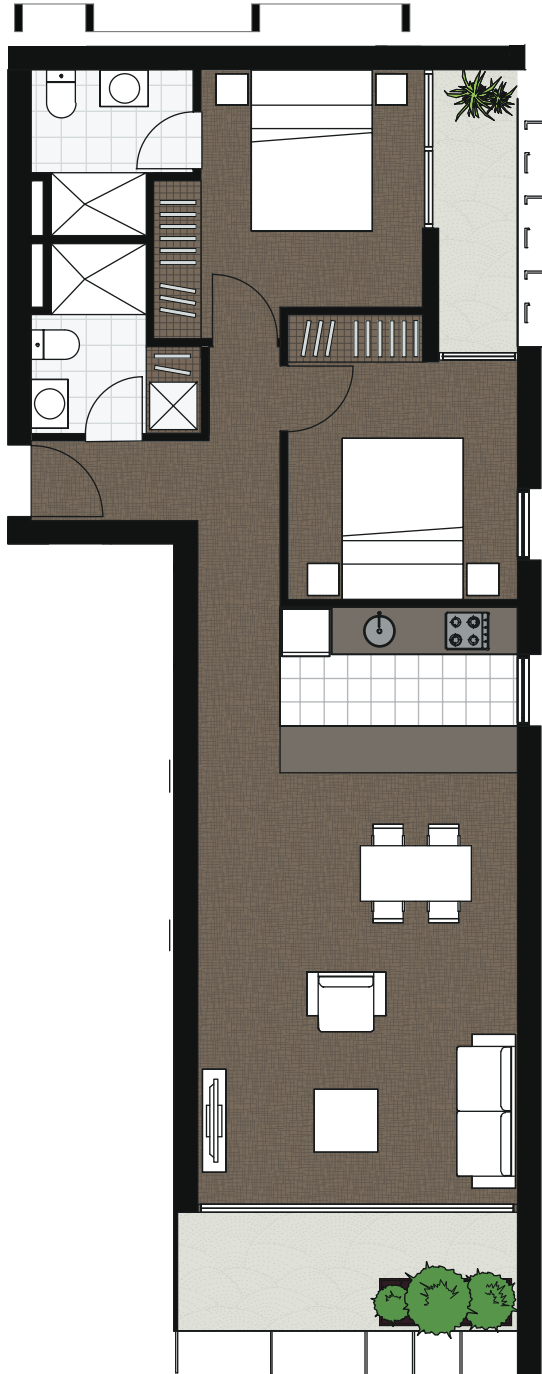


101

Level: 1
 No Bedrooms: 2
 No Bathrooms: 2
 Floor Area: 71.9m²
 Open Space: 8m²
 Total Area: 79.9m²

0 1 3 5

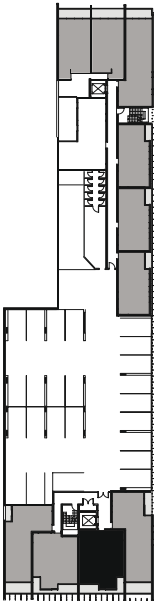


Wardrobe storage system

Dimensions and areas are approximate and are subject to change without notice. Internal measurements are taken from centreline of corridor and party walls and the external face of the outside wall. Prospective purchasers must rely on their own enquiries and should refer to the plans, terms and conditions contained in the contract of sale. Loose furniture, white goods and planters are not included.

102

Level:	1
No Bedrooms:	2
No Bathrooms:	1
Floor Area:	63.4m2
Open Space:	9.1m2
Total Area:	72.5m2

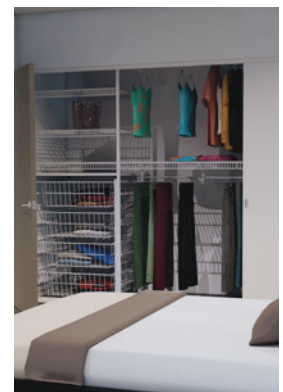
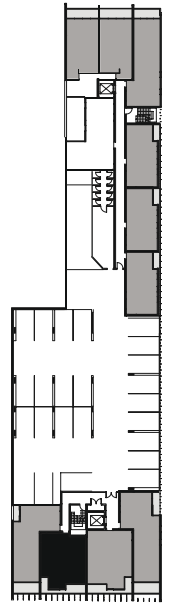


Wardrobe storage system

Dimensions and areas are approximate and are subject to change without notice. Internal measurements are taken from centreline of corridor and party walls and the external face of the outside wall. Prospective purchasers must rely on their own enquiries and should refer to the plans, terms and conditions contained in the contract of sale. Loose furniture, white goods and planters are not included.

103

Level: 1
No Bedrooms: 2
No Bathrooms: 1
Floor Area: 58.9m²
Open Space: 9.2m²
Total Area: 68.1m²



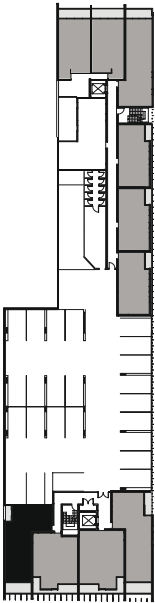
Wardrobe storage system

Dimensions and areas are approximate and are subject to change without notice. Internal measurements are taken from centreline of corridor and party walls and the external face of the outside wall. Prospective purchasers must rely on their own enquiries and should refer to the plans, terms and conditions contained in the contract of sale. Loose furniture, white goods and planters are not included.

AMIA

104

Level:	1
No Bedrooms:	2
No Bathrooms:	2
Floor Area:	65.7m2
Open Space:	8m2
Total Area:	73.7m2

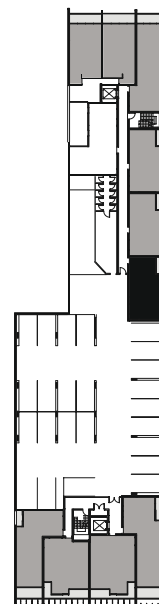
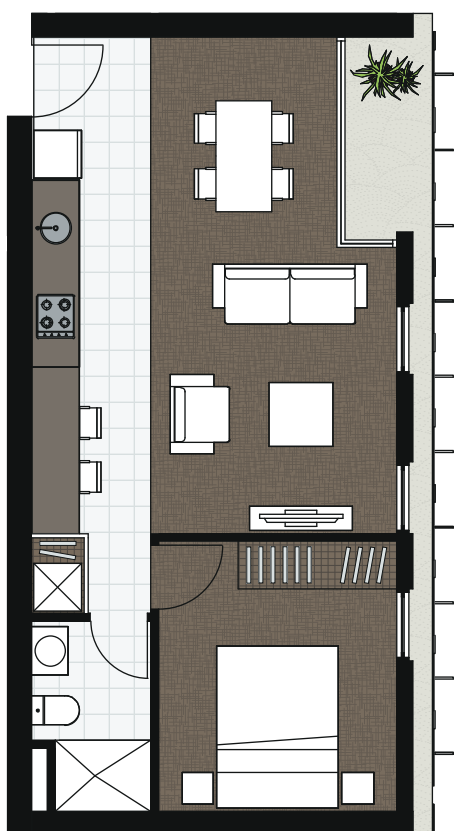


Wardrobe storage system

Dimensions and areas are approximate and are subject to change without notice. Internal measurements are taken from centreline of corridor and party walls and the external face of the outside wall. Prospective purchasers must rely on their own enquiries and should refer to the plans, terms and conditions contained in the contract of sale. Loose furniture, white goods and planters are not included.

105

Level: 1
 No Bedrooms: 1+Study
 No Bathrooms: 1
 Floor Area: 50.4m²
 Open Space: 2.8m²
 Total Area: 53.2m²



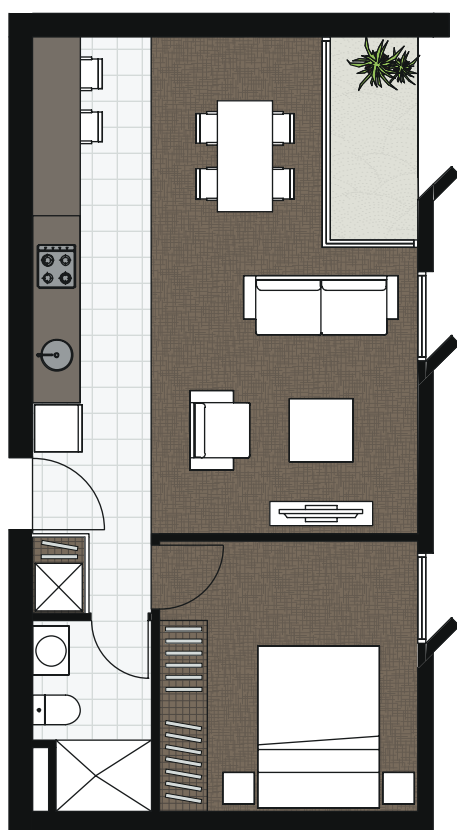
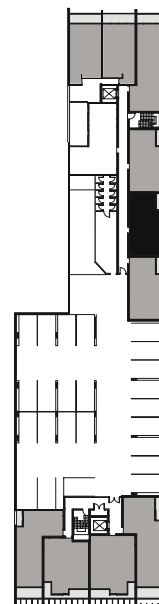
Wardrobe storage system

Dimensions and areas are approximate and are subject to change without notice. Internal measurements are taken from centreline of corridor and party walls and the external face of the outside wall. Prospective purchasers must rely on their own enquiries and should refer to the plans, terms and conditions contained in the contract of sale. Loose furniture, white goods and planters are not included.

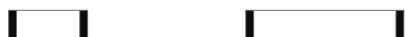
AMIA

106

Level: 1
 No Bedrooms: 1+Study
 No Bathrooms: 1
 Floor Area: 51.4m²
 Open Space: 2.8m²
 Total Area: 54.2m²



0 1 3 5



Wardrobe storage system

Dimensions and areas are approximate and are subject to change without notice. Internal measurements are taken from centreline of corridor and party walls and the external face of the outside wall. Prospective purchasers must rely on their own enquiries and should refer to the plans, terms and conditions contained in the contract of sale. Loose furniture, white goods and planters are not included.

AMIA

107

Level:

1

No Bedrooms:

1+Study

No Bathrooms:

1

Floor Area:

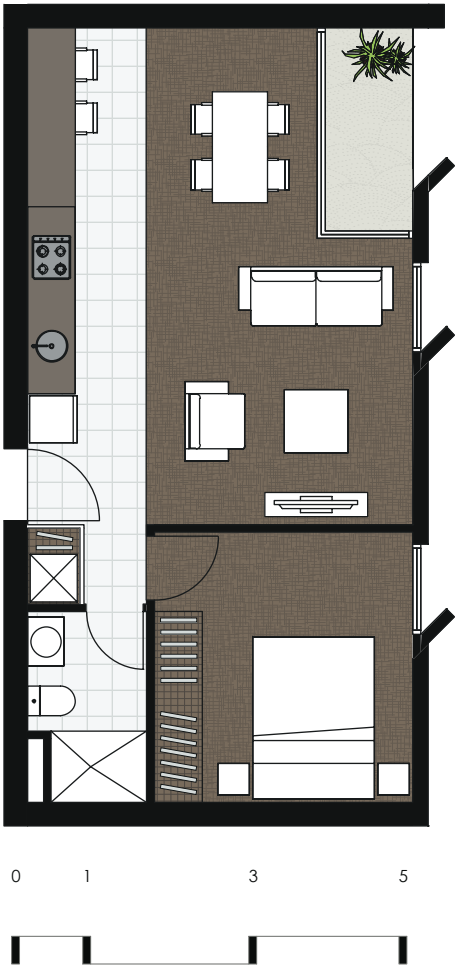
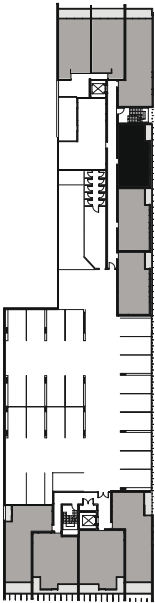
50.7m²

Open Space:

2.8m²

Total Area:

53.5m²

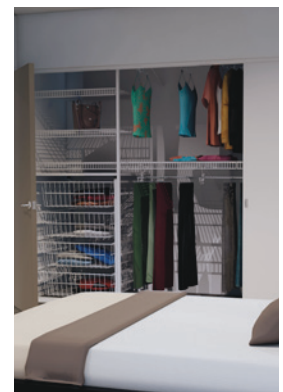
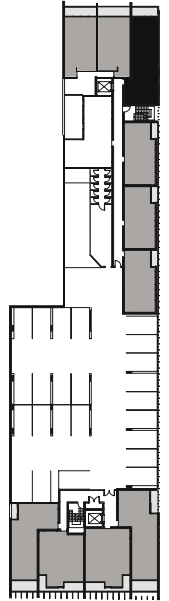
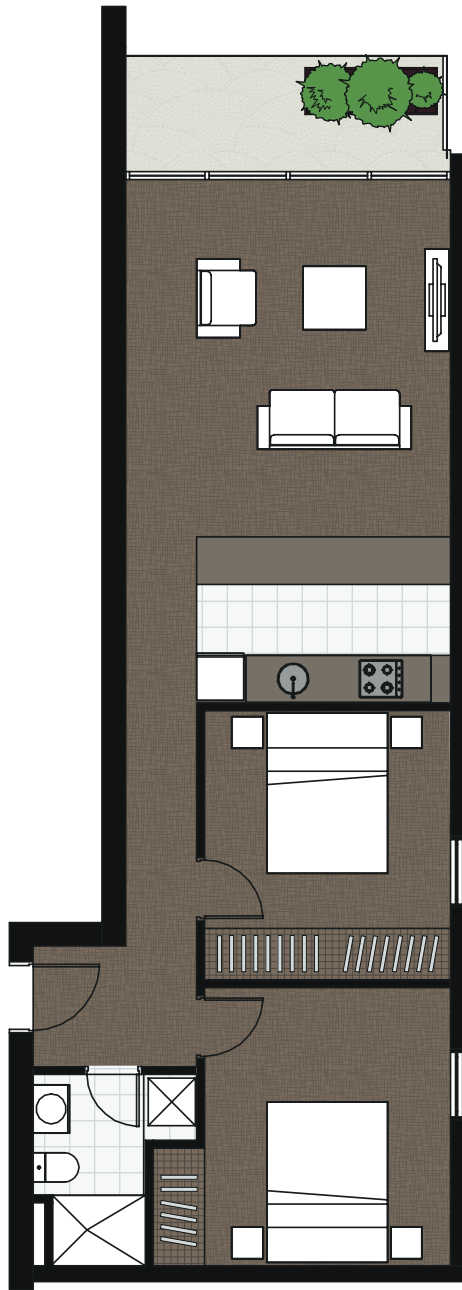


Wardrobe storage system

Dimensions and areas are approximate and are subject to change without notice. Internal measurements are taken from centreline of corridor and party walls and the external face of the outside wall. Prospective purchasers must rely on their own enquiries and should refer to the plans, terms and conditions contained in the contract of sale. Loose furniture, white goods and planters are not included.

108

Level: 1
 No Bedrooms: 2
 No Bathrooms: 1
 Floor Area: 67.4m²
 Open Space: 6.3m²
 Total Area: 73.7m²



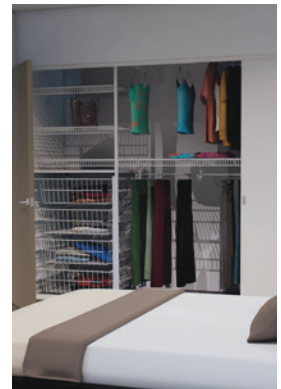
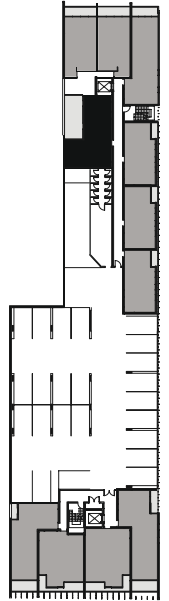
Wardrobe storage system

Dimensions and areas are approximate and are subject to change without notice. Internal measurements are taken from centreline of corridor and party walls and the external face of the outside wall. Prospective purchasers must rely on their own enquiries and should refer to the plans, terms and conditions contained in the contract of sale. Loose furniture, white goods and planters are not included.

AMIA

109

Level: 1
 No Bedrooms: 2
 No Bathrooms: 2
 Floor Area: 69.4m²
 Open Space: 19.8m²
 Total Area: 89.2m²



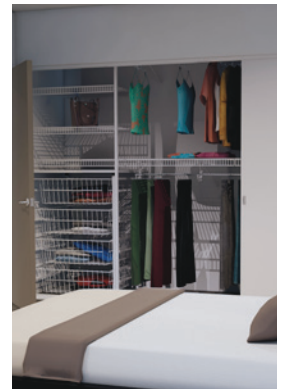
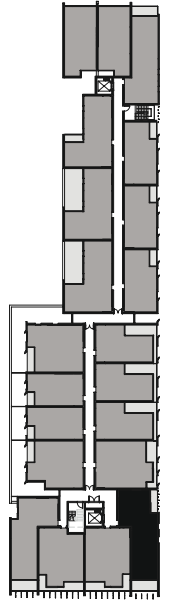
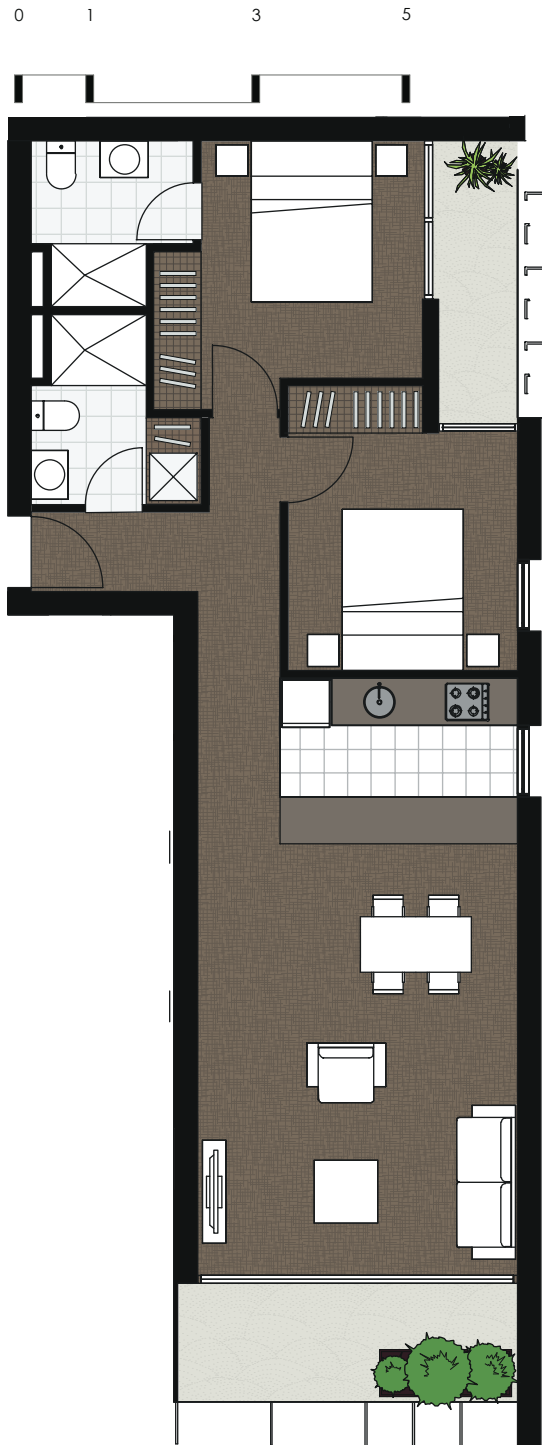
Wardrobe storage system

Dimensions and areas are approximate and are subject to change without notice. Internal measurements are taken from centreline of corridor and party walls and the external face of the outside wall. Prospective purchasers must rely on their own enquiries and should refer to the plans, terms and conditions contained in the contract of sale. Loose furniture, white goods and planters are not included.

AMIA

201

Level: 2
 No Bedrooms: 2
 No Bathrooms: 2
 Floor Area: 72.8m²
 Open Space: 8m²
 Total Area: 80.8m²

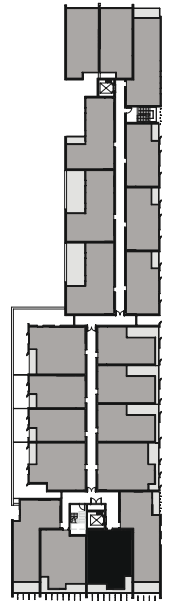


Wardrobe storage system

Dimensions and areas are approximate and are subject to change without notice. Internal measurements are taken from centreline of corridor and party walls and the external face of the outside wall. Prospective purchasers must rely on their own enquiries and should refer to the plans, terms and conditions contained in the contract of sale. Loose furniture, white goods and planters are not included.

202

Level: 2
 No Bedrooms: 2
 No Bathrooms: 1
 Floor Area: 62.7m²
 Open Space: 9.3m²
 Total Area: 72m²



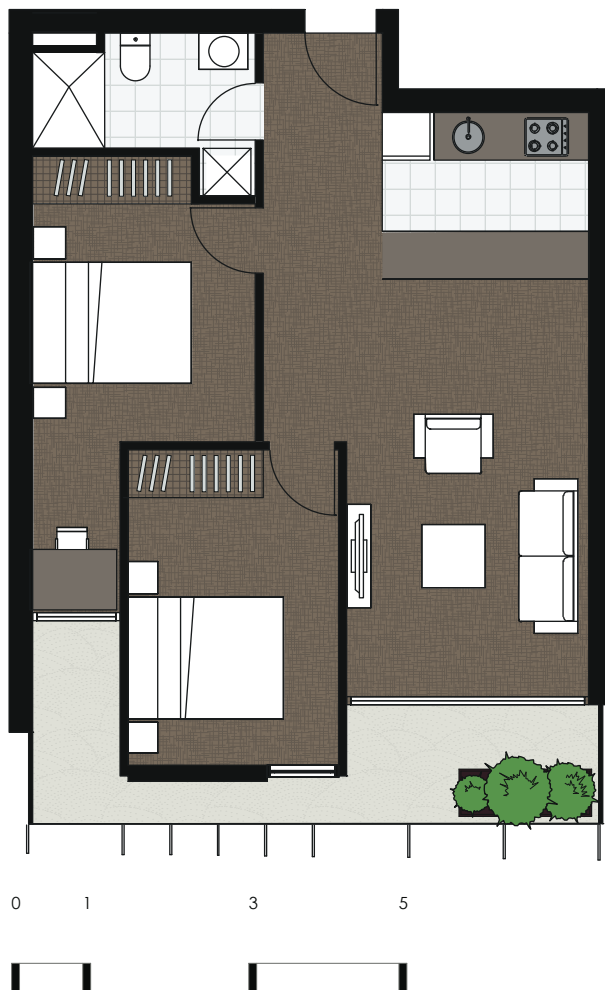
Wardrobe storage system

Dimensions and areas are approximate and are subject to change without notice. Internal measurements are taken from centreline of corridor and party walls and the external face of the outside wall. Prospective purchasers must rely on their own enquiries and should refer to the plans, terms and conditions contained in the contract of sale. Loose furniture, white goods and planters are not included.

AMIA

203

Level: 2
 No Bedrooms: 2
 No Bathrooms: 1
 Floor Area: 60.7m²
 Open Space: 9.2m²
 Total Area: 69.9m²



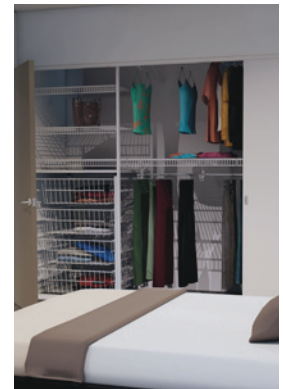
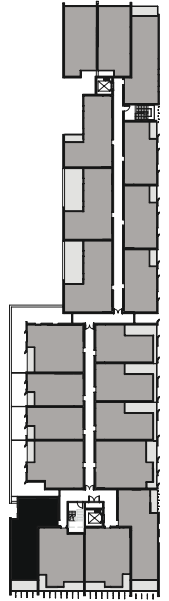
Wardrobe storage system

Dimensions and areas are approximate and are subject to change without notice. Internal measurements are taken from centreline of corridor and party walls and the external face of the outside wall. Prospective purchasers must rely on their own enquiries and should refer to the plans, terms and conditions contained in the contract of sale. Loose furniture, white goods and planters are not included.

AMIA

204

Level: 2
 No Bedrooms: 2
 No Bathrooms: 2
 Floor Area: 70.7m²
 Open Space: 8m²
 Total Area: 78.7m²



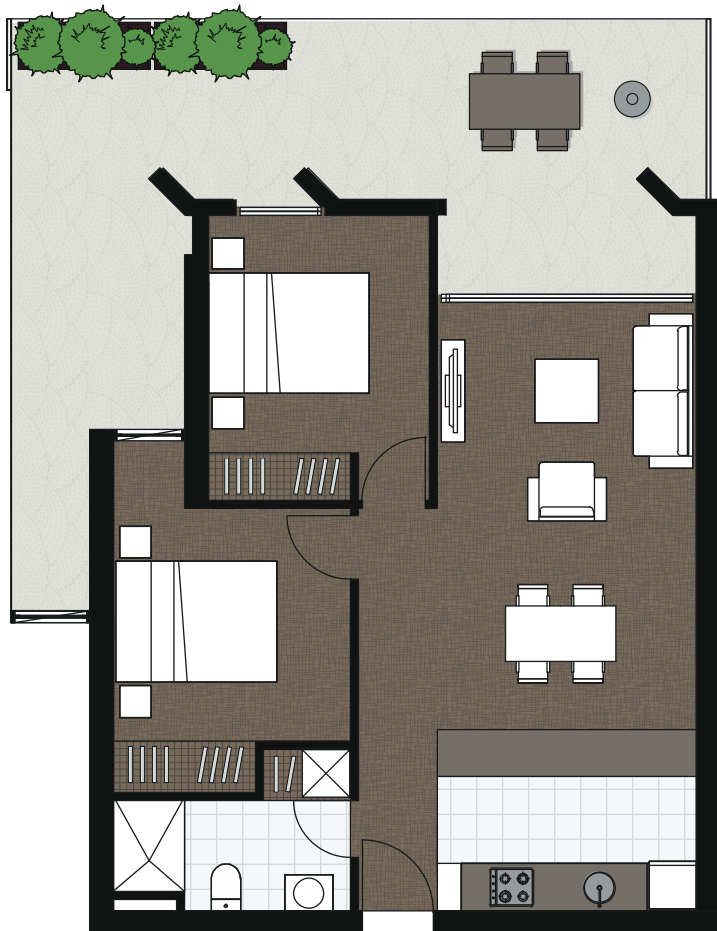
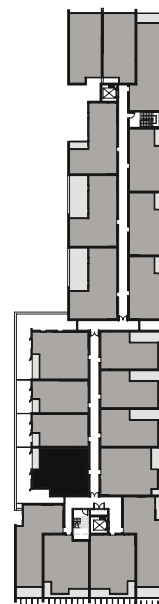
Wardrobe storage system

Dimensions and areas are approximate and are subject to change without notice. Internal measurements are taken from centreline of corridor and party walls and the external face of the outside wall. Prospective purchasers must rely on their own enquiries and should refer to the plans, terms and conditions contained in the contract of sale. Loose furniture, white goods and planters are not included.

AMIA

205

Level:	2
No Bedrooms:	2
No Bathrooms:	1
Floor Area:	64.2m ²
Open Space:	33.2m ²
Total Area:	97.4m ²



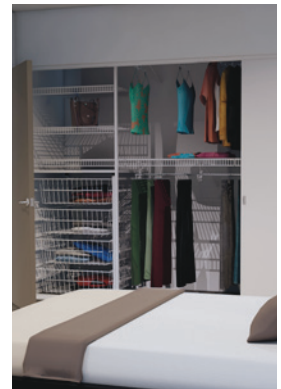
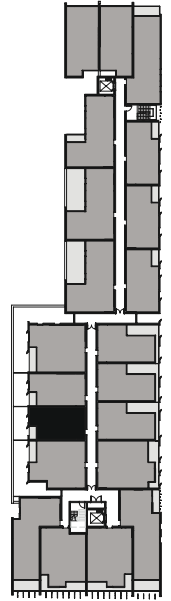
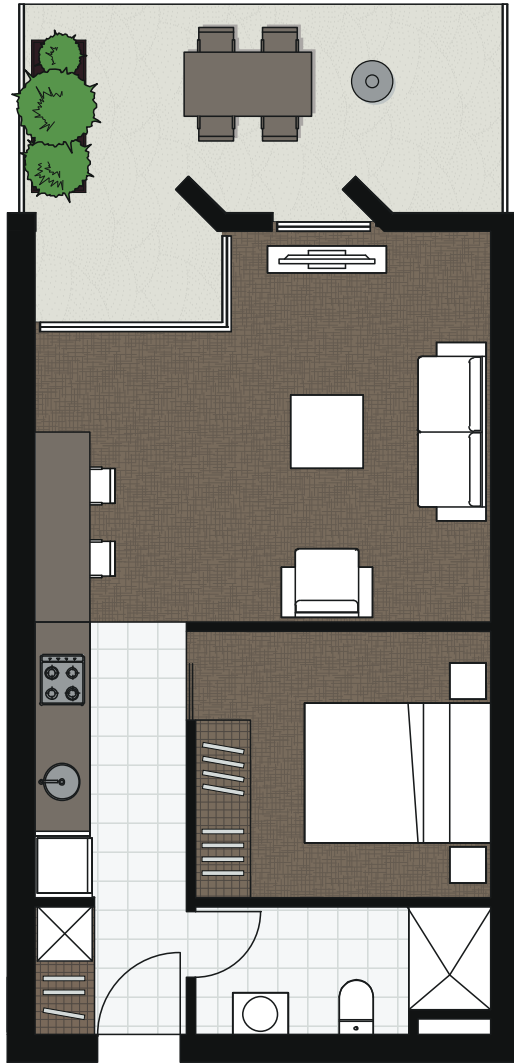
Wardrobe storage system

Dimensions and areas are approximate and are subject to change without notice. Internal measurements are taken from centreline of corridor and party walls and the external face of the outside wall. Prospective purchasers must rely on their own enquiries and should refer to the plans, terms and conditions contained in the contract of sale. Loose furniture, white goods and planters are not included.

AMIA

206

Level: 2
 No Bedrooms: 1+Study
 No Bathrooms: 1
 Floor Area: 46m²
 Open Space: 14.6m²
 Total Area: 60.6m²



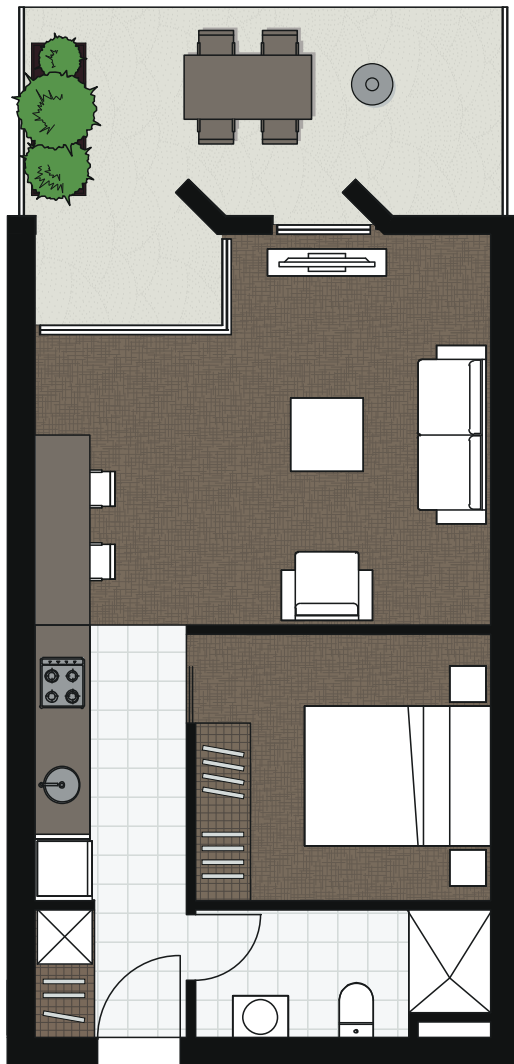
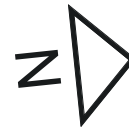
Wardrobe storage system

Dimensions and areas are approximate and are subject to change without notice. Internal measurements are taken from centreline of corridor and party walls and the external face of the outside wall. Prospective purchasers must rely on their own enquiries and should refer to the plans, terms and conditions contained in the contract of sale. Loose furniture, white goods and planters are not included.

AMIA

207

Level: 2
 No Bedrooms: 1+Study
 No Bathrooms: 1
 Floor Area: 45.9m²
 Open Space: 14.8m²
 Total Area: 60.7m²



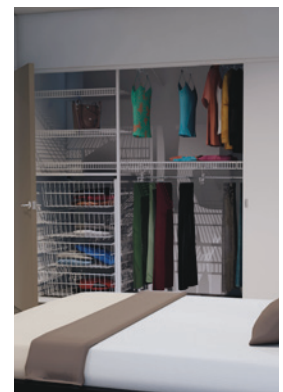
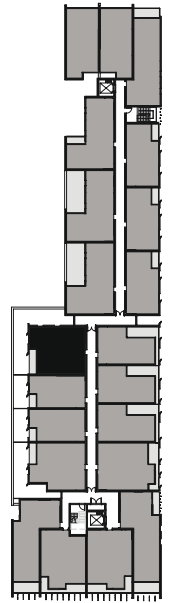
Wardrobe storage system

Dimensions and areas are approximate and are subject to change without notice. Internal measurements are taken from centreline of corridor and party walls and the external face of the outside wall. Prospective purchasers must rely on their own enquiries and should refer to the plans, terms and conditions contained in the contract of sale. Loose furniture, white goods and planters are not included.

AMIA

208

Level: 2
 No Bedrooms: 2
 No Bathrooms: 1
 Floor Area: 65.6m²
 Open Space: 45.9m²
 Total Area: 111.5m²

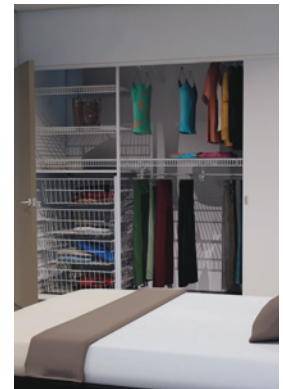
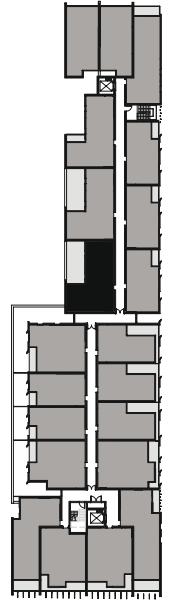


Wardrobe storage system

Dimensions and areas are approximate and are subject to change without notice. Internal measurements are taken from centreline of corridor and party walls and the external face of the outside wall. Prospective purchasers must rely on their own enquiries and should refer to the plans, terms and conditions contained in the contract of sale. Loose furniture, white goods and planters are not included.

209

Level: 2
 No Bedrooms: 2
 No Bathrooms: 2
 Floor Area: 70.9m²
 Open Space: 19.3m²
 Total Area: 90.2m²



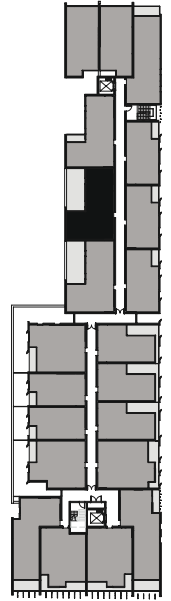
Wardrobe storage system

Dimensions and areas are approximate and are subject to change without notice. Internal measurements are taken from centreline of corridor and party walls and the external face of the outside wall. Prospective purchasers must rely on their own enquiries and should refer to the plans, terms and conditions contained in the contract of sale. Loose furniture, white goods and planters are not included.

AMIA

210

Level: 2
 No Bedrooms: 2
 No Bathrooms: 2
 Floor Area: 70.5m²
 Open Space: 19m²
 Total Area: 89.5m²



Wardrobe storage system

Dimensions and areas are approximate and are subject to change without notice. Internal measurements are taken from centreline of corridor and party walls and the external face of the outside wall. Prospective purchasers must rely on their own enquiries and should refer to the plans, terms and conditions contained in the contract of sale. Loose furniture, white goods and planters are not included.

AMIA

211

Level:

2

No Bedrooms:

2

No Bathrooms:

2

Floor Area:

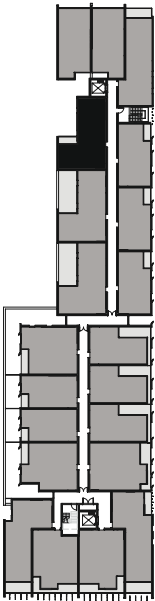
67.5m2

Open Space:

4m2

Total Area:

71.5m2

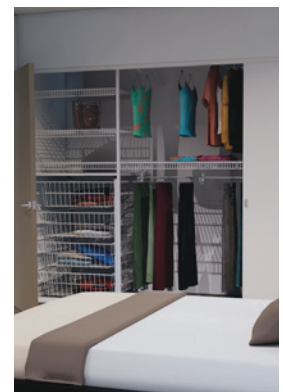
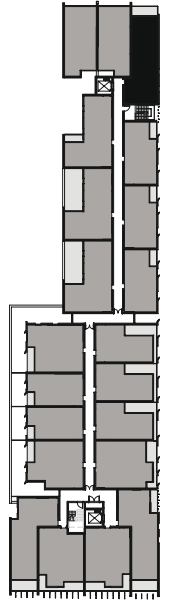
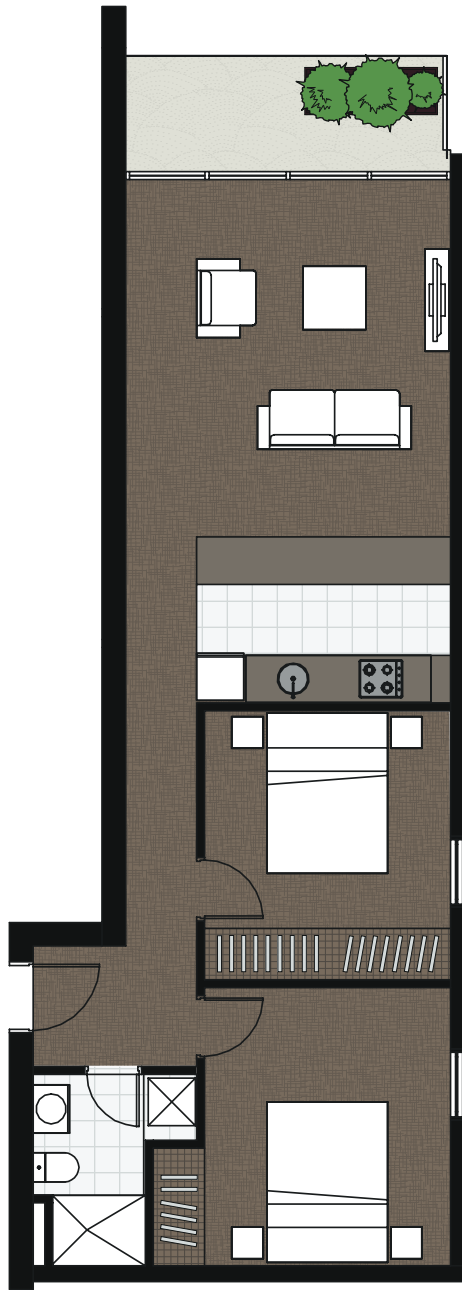


Wardrobe storage system

Dimensions and areas are approximate and are subject to change without notice. Internal measurements are taken from centreline of corridor and party walls and the external face of the outside wall. Prospective purchasers must rely on their own enquiries and should refer to the plans, terms and conditions contained in the contract of sale. Loose furniture, white goods and planters are not included.

212

Level: 2
 No Bedrooms: 2
 No Bathrooms: 1
 Floor Area: 67.3m²
 Open Space: 6m²
 Total Area: 73.3m²



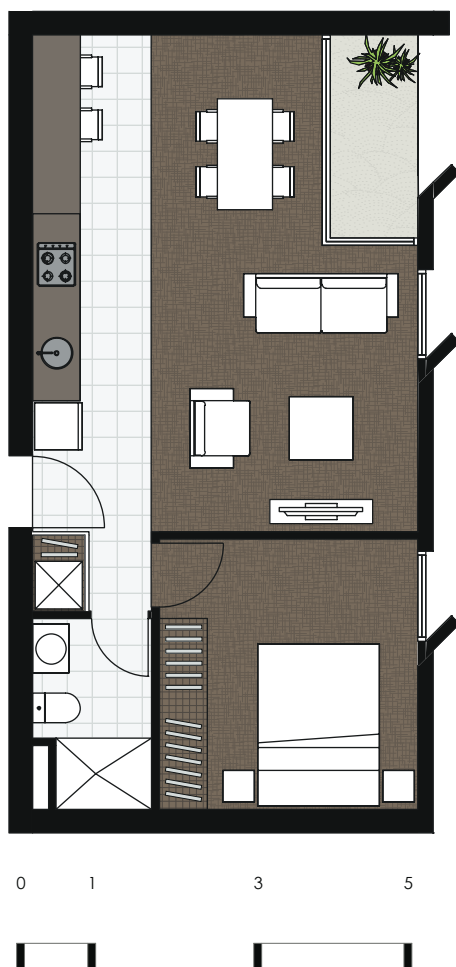
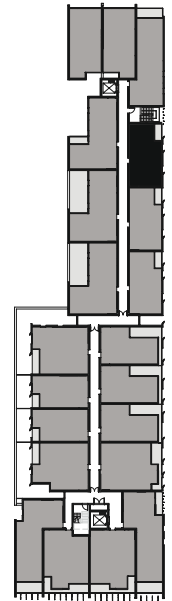
Wardrobe storage system

Dimensions and areas are approximate and are subject to change without notice. Internal measurements are taken from centreline of corridor and party walls and the external face of the outside wall. Prospective purchasers must rely on their own enquiries and should refer to the plans, terms and conditions contained in the contract of sale. Loose furniture, white goods and planters are not included.

AMIA

213

Level:	2
No Bedrooms:	1+Study
No Bathrooms:	1
Floor Area:	50m2
Open Space:	2.8m2
Total Area:	52.8m2



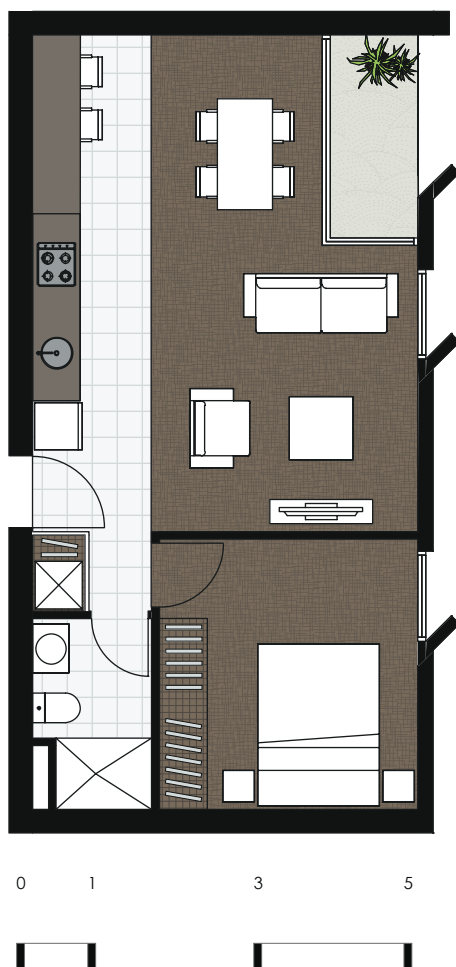
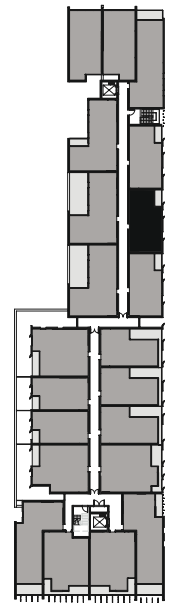
Wardrobe storage system

Dimensions and areas are approximate and are subject to change without notice. Internal measurements are taken from centreline of corridor and party walls and the external face of the outside wall. Prospective purchasers must rely on their own enquiries and should refer to the plans, terms and conditions contained in the contract of sale. Loose furniture, white goods and planters are not included.

AMIA

214

Level:	2
No Bedrooms:	1+Study
No Bathrooms:	1
Floor Area:	50.1m2
Open Space:	2.8m2
Total Area:	52.9m2



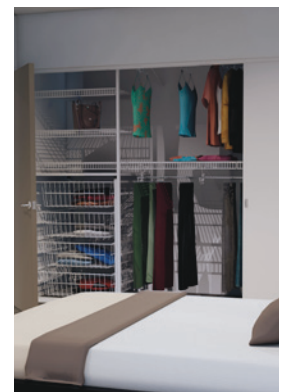
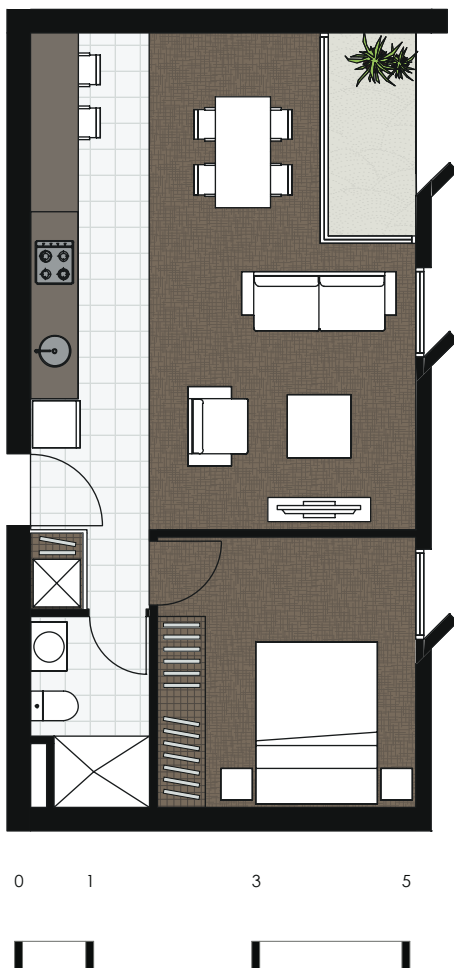
Wardrobe storage system

Dimensions and areas are approximate and are subject to change without notice. Internal measurements are taken from centreline of corridor and party walls and the external face of the outside wall. Prospective purchasers must rely on their own enquiries and should refer to the plans, terms and conditions contained in the contract of sale. Loose furniture, white goods and planters are not included.

AMIA

215

Level: 2
 No Bedrooms: 1+Study
 No Bathrooms: 1
 Floor Area: 50.3m²
 Open Space: 2.8m²
 Total Area: 53.1m²



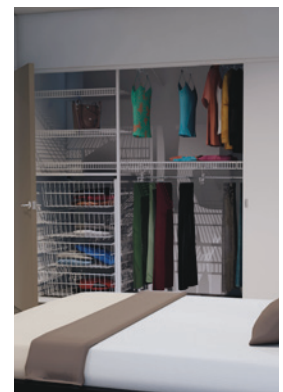
Wardrobe storage system

Dimensions and areas are approximate and are subject to change without notice. Internal measurements are taken from centreline of corridor and party walls and the external face of the outside wall. Prospective purchasers must rely on their own enquiries and should refer to the plans, terms and conditions contained in the contract of sale. Loose furniture, white goods and planters are not included.

AMIA

216

Level: 2
 No Bedrooms: 1
 No Bathrooms: 1
 Floor Area: 50.6m²
 Open Space: 10.3m²
 Total Area: 60.9m²



Wardrobe storage system

Dimensions and areas are approximate and are subject to change without notice. Internal measurements are taken from centreline of corridor and party walls and the external face of the outside wall. Prospective purchasers must rely on their own enquiries and should refer to the plans, terms and conditions contained in the contract of sale. Loose furniture, white goods and planters are not included.

AMIA

217

Level:	2
No Bedrooms:	1
No Bathrooms:	1
Floor Area:	50.9m2
Open Space:	9.5m2
Total Area:	60.4m2

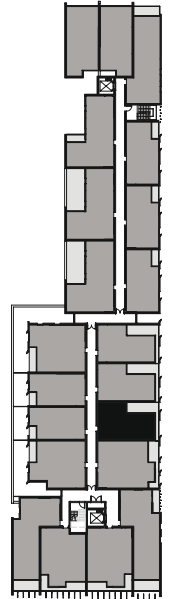


Wardrobe storage system

Dimensions and areas are approximate and are subject to change without notice. Internal measurements are taken from centreline of corridor and party walls and the external face of the outside wall. Prospective purchasers must rely on their own enquiries and should refer to the plans, terms and conditions contained in the contract of sale. Loose furniture, white goods and planters are not included.

218

Level: 2
 No Bedrooms: 1
 No Bathrooms: 1
 Floor Area: 50m²
 Open Space: 9.8m²
 Total Area: 59.8m²



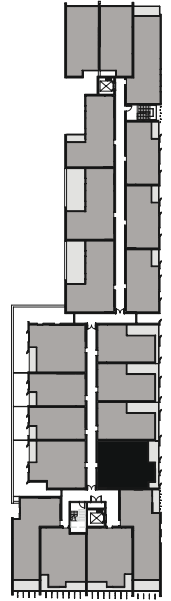
Wardrobe storage system

Dimensions and areas are approximate and are subject to change without notice. Internal measurements are taken from centreline of corridor and party walls and the external face of the outside wall. Prospective purchasers must rely on their own enquiries and should refer to the plans, terms and conditions contained in the contract of sale. Loose furniture, white goods and planters are not included.

AMIA

219

Level: 2
 No Bedrooms: 2
 No Bathrooms: 1
 Floor Area: 67.8m²
 Open Space: 8.5m²
 Total Area: 76.3m²



Wardrobe storage system

Dimensions and areas are approximate and are subject to change without notice. Internal measurements are taken from centreline of corridor and party walls and the external face of the outside wall. Prospective purchasers must rely on their own enquiries and should refer to the plans, terms and conditions contained in the contract of sale. Loose furniture, white goods and planters are not included.

AMIA

301

Level: 3
 No Bedrooms: 2
 No Bathrooms: 2
 Floor Area: 73m²
 Open Space: 8m²
 Total Area: 81m²

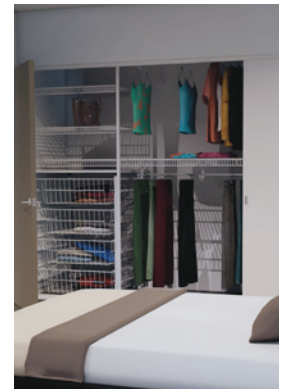
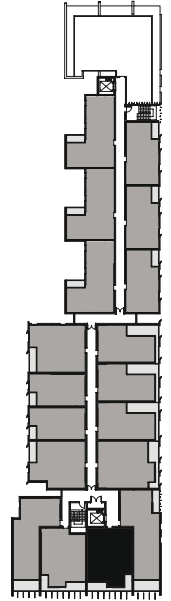


Dimensions and areas are approximate and are subject to change without notice. Internal measurements are taken from centreline of corridor and party walls and the external face of the outside wall. Prospective purchasers must rely on their own enquiries and should refer to the plans, terms and conditions contained in the contract of sale. Loose furniture, white goods and planters are not included.

AMIA

302

Level: 3
 No Bedrooms: 2
 No Bathrooms: 1
 Floor Area: 63.9m²
 Open Space: 9.3m²
 Total Area: 73.2m²



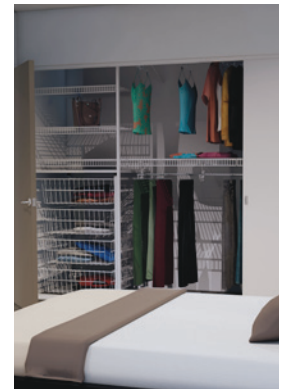
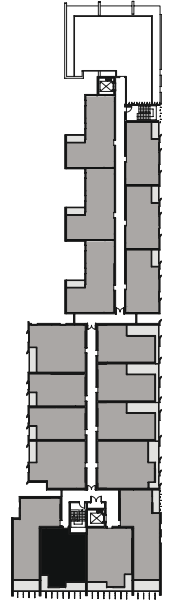
Wardrobe storage system

Dimensions and areas are approximate and are subject to change without notice. Internal measurements are taken from centreline of corridor and party walls and the external face of the outside wall. Prospective purchasers must rely on their own enquiries and should refer to the plans, terms and conditions contained in the contract of sale. Loose furniture, white goods and planters are not included.

AMIA

303

Level: 3
No Bedrooms: 2
No Bathrooms: 1
Floor Area: 62.4m²
Open Space: 9.3m²
Total Area: 71.7m²



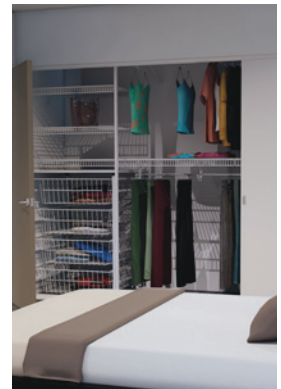
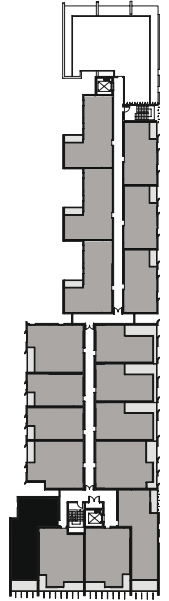
Wardrobe storage system

Dimensions and areas are approximate and are subject to change without notice. Internal measurements are taken from centreline of corridor and party walls and the external face of the outside wall. Prospective purchasers must rely on their own enquiries and should refer to the plans, terms and conditions contained in the contract of sale. Loose furniture, white goods and planters are not included.

AMIA

304

Level: 3
 No Bedrooms: 2
 No Bathrooms: 2
 Floor Area: 69.9m²
 Open Space: 8m²
 Total Area: 77.9m²



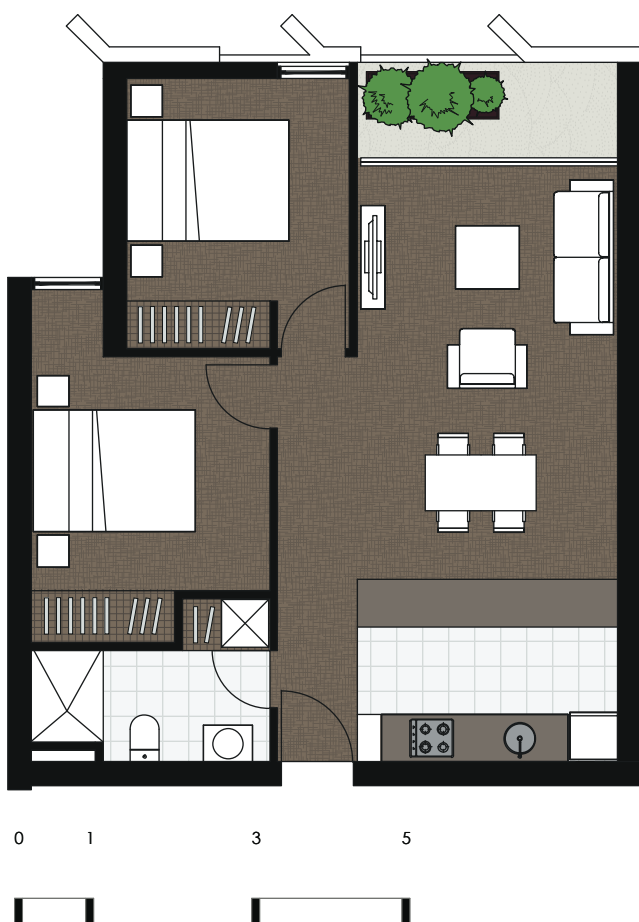
Wardrobe storage system

Dimensions and areas are approximate and are subject to change without notice. Internal measurements are taken from centreline of corridor and party walls and the external face of the outside wall. Prospective purchasers must rely on their own enquiries and should refer to the plans, terms and conditions contained in the contract of sale. Loose furniture, white goods and planters are not included.

AMIA

305

Level: 3
No Bedrooms: 2
No Bathrooms: 1
Floor Area: 64.1m²
Open Space: 3.8m²
Total Area: 67.9m²



Wardrobe storage system

Dimensions and areas are approximate and are subject to change without notice. Internal measurements are taken from centreline of corridor and party walls and the external face of the outside wall. Prospective purchasers must rely on their own enquiries and should refer to the plans, terms and conditions contained in the contract of sale. Loose furniture, white goods and planters are not included.

AMIA

306

Level: 3
No Bedrooms: 1+Study
No Bathrooms: 1
Floor Area: 46.1m²
Open Space: 2.2m²
Total Area: 48.3m²



Wardrobe storage system

Dimensions and areas are approximate and are subject to change without notice. Internal measurements are taken from centreline of corridor and party walls and the external face of the outside wall. Prospective purchasers must rely on their own enquiries and should refer to the plans, terms and conditions contained in the contract of sale. Loose furniture, white goods and planters are not included.

AMIA

307

Level:

3

No Bedrooms:

1+Study

No Bathrooms:

1

Floor Area:

46.1m2

Open Space:

2.5m2

Total Area:

48.6m2

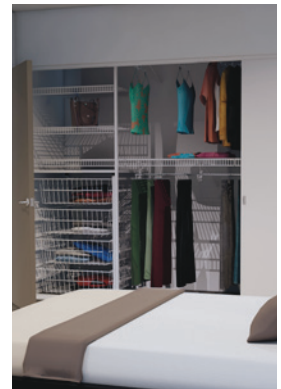
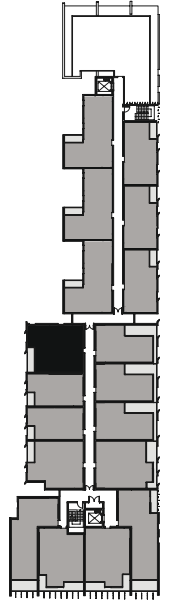


Wardrobe storage system

Dimensions and areas are approximate and are subject to change without notice. Internal measurements are taken from centreline of corridor and party walls and the external face of the outside wall. Prospective purchasers must rely on their own enquiries and should refer to the plans, terms and conditions contained in the contract of sale. Loose furniture, white goods and planters are not included.

308

Level: 3
 No Bedrooms: 2
 No Bathrooms: 1
 Floor Area: 65.5m²
 Open Space: 4.2m²
 Total Area: 69.7m²



Wardrobe storage system

Dimensions and areas are approximate and are subject to change without notice. Internal measurements are taken from centreline of corridor and party walls and the external face of the outside wall. Prospective purchasers must rely on their own enquiries and should refer to the plans, terms and conditions contained in the contract of sale. Loose furniture, white goods and planters are not included.

AMIA

309

Level: 3
 No Bedrooms: 2
 No Bathrooms: 2
 Floor Area: 68.2m²
 Open Space: 3.2m²
 Total Area: 71.4m²



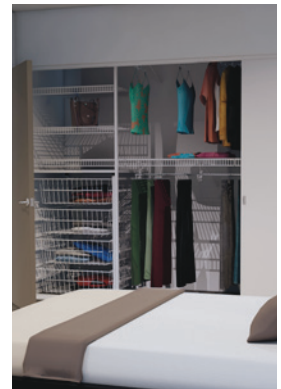
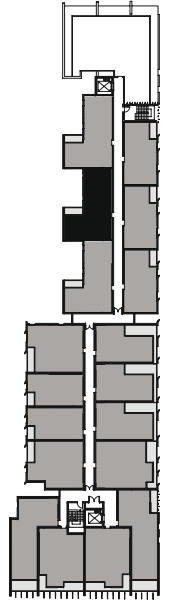
Wardrobe storage system

Dimensions and areas are approximate and are subject to change without notice. Internal measurements are taken from centreline of corridor and party walls and the external face of the outside wall. Prospective purchasers must rely on their own enquiries and should refer to the plans, terms and conditions contained in the contract of sale. Loose furniture, white goods and planters are not included.

AMIA

310

Level: 3
No Bedrooms: 2
No Bathrooms: 2
Floor Area: 67.5m²
Open Space: 3.2m²
Total Area: 70.7m²



Wardrobe storage system

Dimensions and areas are approximate and are subject to change without notice. Internal measurements are taken from centreline of corridor and party walls and the external face of the outside wall. Prospective purchasers must rely on their own enquiries and should refer to the plans, terms and conditions contained in the contract of sale. Loose furniture, white goods and planters are not included.

AMIA

311

Level:	3
No Bedrooms:	2
No Bathrooms:	2
Floor Area:	67.4m2
Open Space:	3.2m2
Total Area:	70.6m2

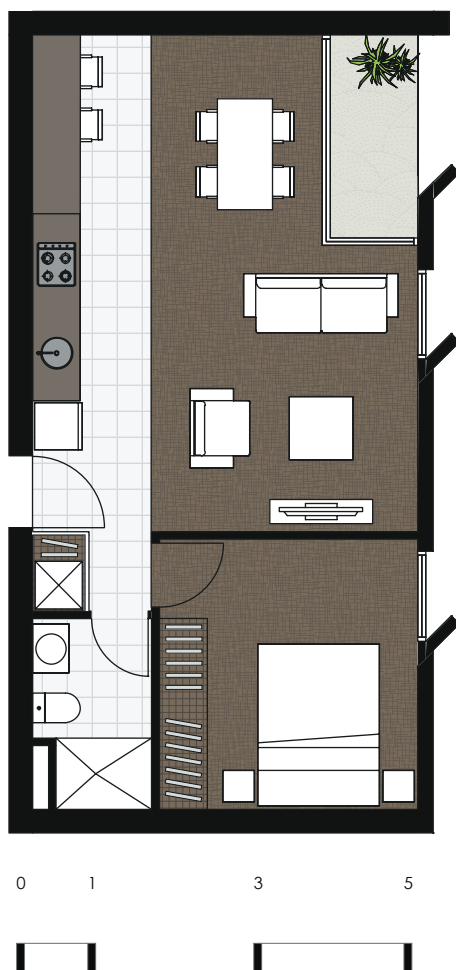
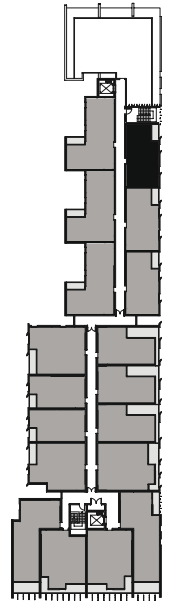


Wardrobe storage system

Dimensions and areas are approximate and are subject to change without notice. Internal measurements are taken from centreline of corridor and party walls and the external face of the outside wall. Prospective purchasers must rely on their own enquiries and should refer to the plans, terms and conditions contained in the contract of sale. Loose furniture, white goods and planters are not included.

312

Level: 3
 No Bedrooms: 1+Study
 No Bathrooms: 1
 Floor Area: 50.9m²
 Open Space: 3m²
 Total Area: 53.9m²



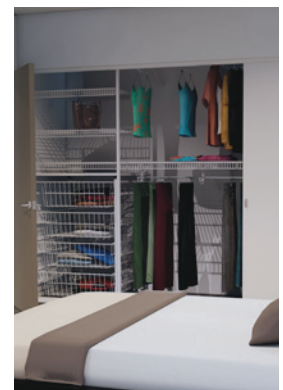
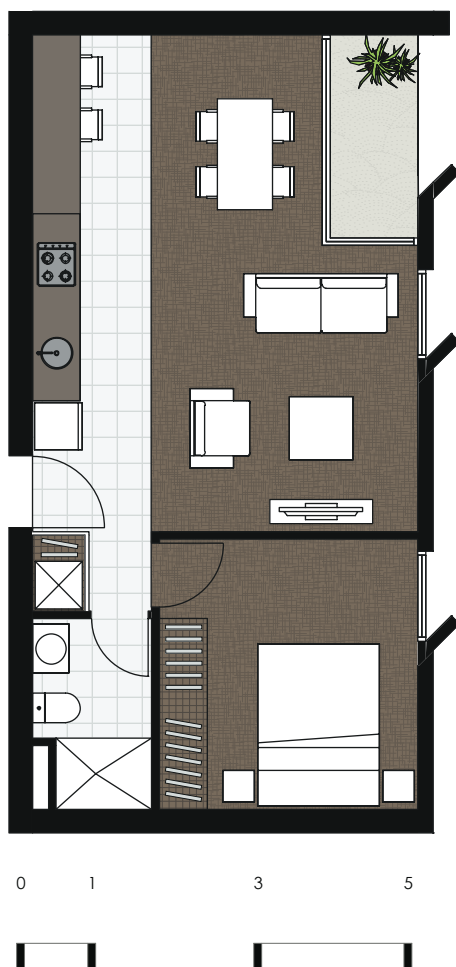
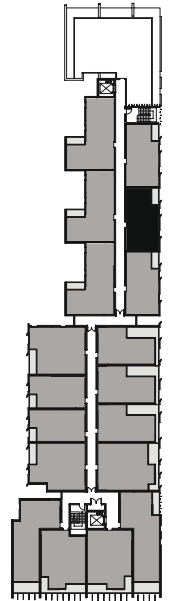
Wardrobe storage system

Dimensions and areas are approximate and are subject to change without notice. Internal measurements are taken from centreline of corridor and party walls and the external face of the outside wall. Prospective purchasers must rely on their own enquiries and should refer to the plans, terms and conditions contained in the contract of sale. Loose furniture, white goods and planters are not included.

AMIA

313

Level: 3
 No Bedrooms: 1+Study
 No Bathrooms: 1
 Floor Area: 51.5m²
 Open Space: 3m²
 Total Area: 54.5m²



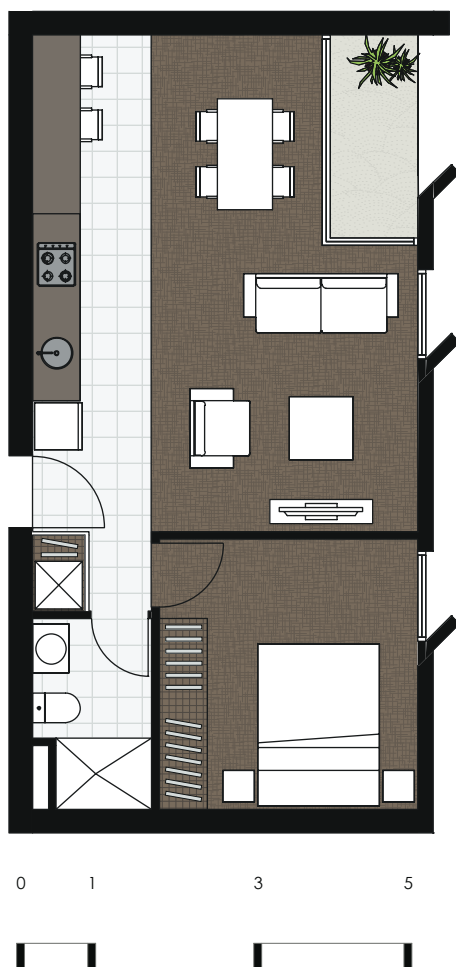
Wardrobe storage system

Dimensions and areas are approximate and are subject to change without notice. Internal measurements are taken from centreline of corridor and party walls and the external face of the outside wall. Prospective purchasers must rely on their own enquiries and should refer to the plans, terms and conditions contained in the contract of sale. Loose furniture, white goods and planters are not included.

AMIA

314

Level: 3
 No Bedrooms: 1+Study
 No Bathrooms: 1
 Floor Area: 50.8m²
 Open Space: 3m²
 Total Area: 53.8m²



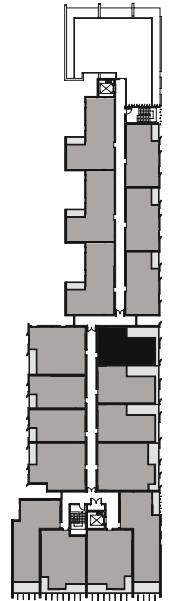
Wardrobe storage system

Dimensions and areas are approximate and are subject to change without notice. Internal measurements are taken from centreline of corridor and party walls and the external face of the outside wall. Prospective purchasers must rely on their own enquiries and should refer to the plans, terms and conditions contained in the contract of sale. Loose furniture, white goods and planters are not included.

AMIA

315

Level: 3
 No Bedrooms: 1
 No Bathrooms: 1
 Floor Area: 50.4m²
 Open Space: 10.3m²
 Total Area: 60.7m²



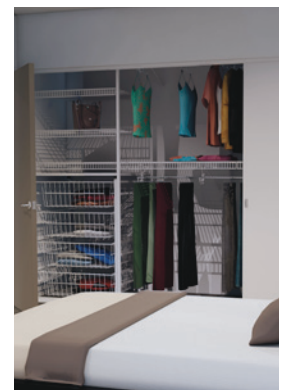
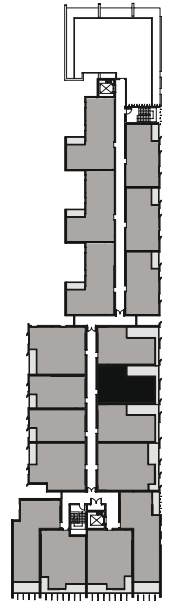
Wardrobe storage system

Dimensions and areas are approximate and are subject to change without notice. Internal measurements are taken from centreline of corridor and party walls and the external face of the outside wall. Prospective purchasers must rely on their own enquiries and should refer to the plans, terms and conditions contained in the contract of sale. Loose furniture, white goods and planters are not included.

AMIA

316

Level:	3
No Bedrooms:	1
No Bathrooms:	1
Floor Area:	50m ²
Open Space:	9.5m ²
Total Area:	59.5m ²



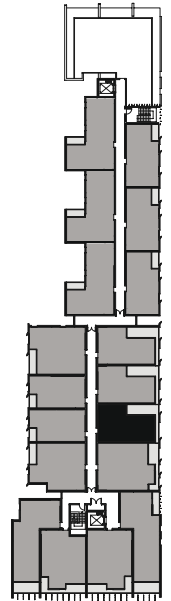
Wardrobe storage system

Dimensions and areas are approximate and are subject to change without notice. Internal measurements are taken from centreline of corridor and party walls and the external face of the outside wall. Prospective purchasers must rely on their own enquiries and should refer to the plans, terms and conditions contained in the contract of sale. Loose furniture, white goods and planters are not included.

AMIA

317

Level: 3
 No Bedrooms: 1
 No Bathrooms: 1
 Floor Area: 50m²
 Open Space: 9.8m²
 Total Area: 59.8m²



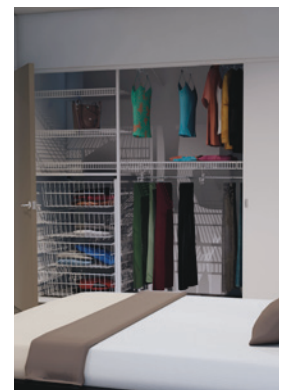
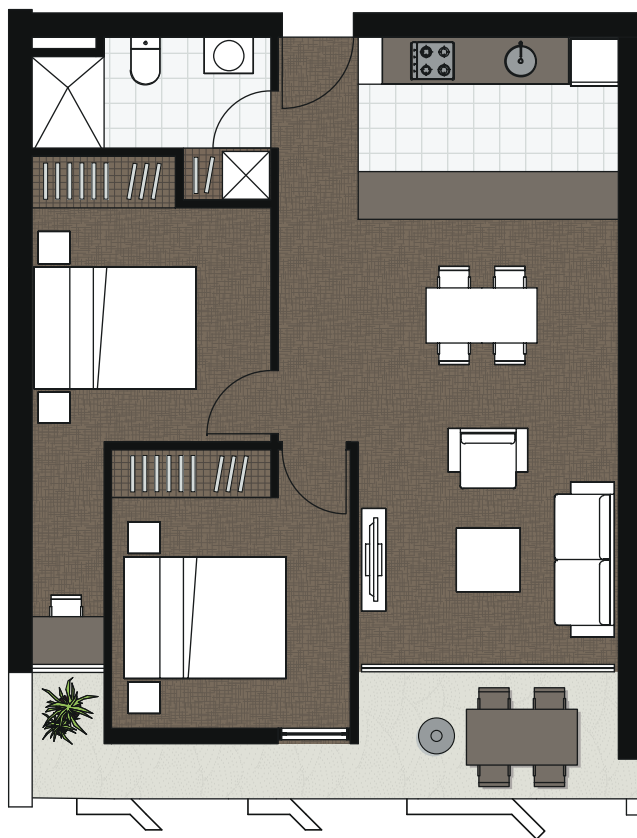
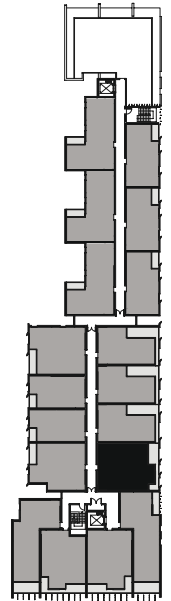
Wardrobe storage system

Dimensions and areas are approximate and are subject to change without notice. Internal measurements are taken from centreline of corridor and party walls and the external face of the outside wall. Prospective purchasers must rely on their own enquiries and should refer to the plans, terms and conditions contained in the contract of sale. Loose furniture, white goods and planters are not included.

AMIA

318

Level: 3
 No Bedrooms: 2
 No Bathrooms: 1
 Floor Area: 67.6m²
 Open Space: 8.5m²
 Total Area: 76.1m²



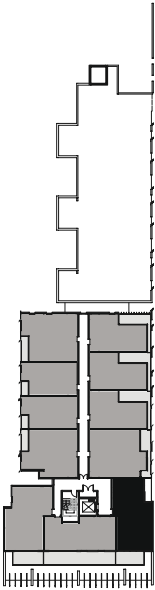
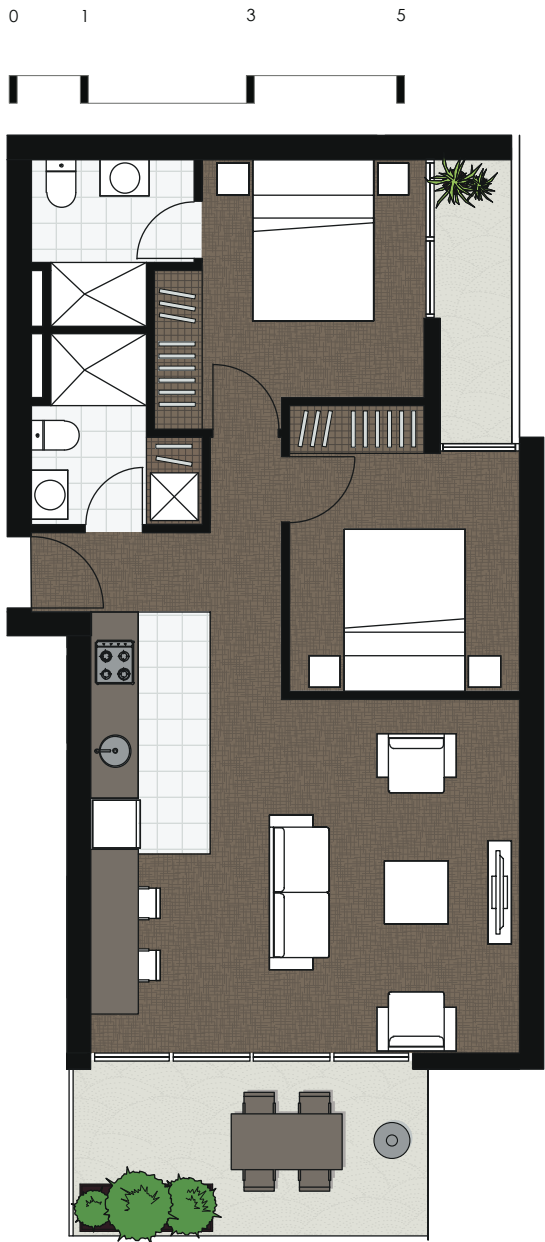
Wardrobe storage system

Dimensions and areas are approximate and are subject to change without notice. Internal measurements are taken from centreline of corridor and party walls and the external face of the outside wall. Prospective purchasers must rely on their own enquiries and should refer to the plans, terms and conditions contained in the contract of sale. Loose furniture, white goods and planters are not included.

AMIA

401

Level:	4
No Bedrooms:	2
No Bathrooms:	2
Floor Area:	66.8m2
Open Space:	9.8m2
Total Area:	76.6m2

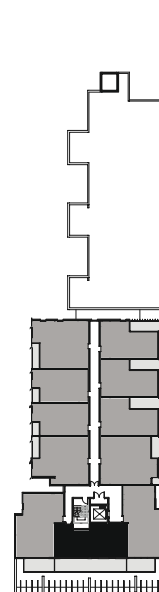


Wardrobe storage system

Dimensions and areas are approximate and are subject to change without notice. Internal measurements are taken from centreline of corridor and party walls and the external face of the outside wall. Prospective purchasers must rely on their own enquiries and should refer to the plans, terms and conditions contained in the contract of sale. Loose furniture, white goods and planters are not included.

402

Level: 4
 No Bedrooms: 2
 No Bathrooms: 2
 Floor Area: 58.8m²
 Open Space: 24.1m²
 Total Area: 82.9m²



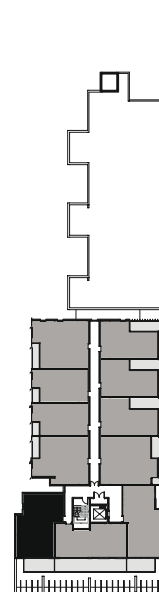
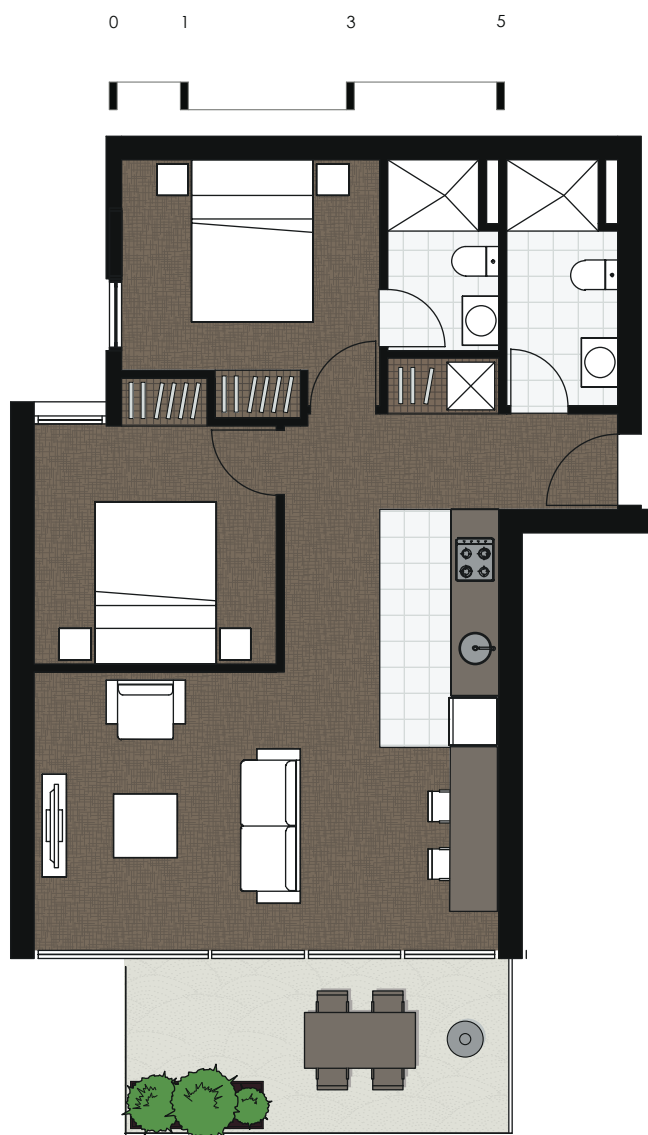
Wardrobe storage system

Dimensions and areas are approximate and are subject to change without notice. Internal measurements are taken from centreline of corridor and party walls and the external face of the outside wall. Prospective purchasers must rely on their own enquiries and should refer to the plans, terms and conditions contained in the contract of sale. Loose furniture, white goods and planters are not included.

AMIA

403

Level: 4
 No Bedrooms: 2
 No Bathrooms: 2
 Floor Area: 67.7m²
 Open Space: 10.5m²
 Total Area: 78.2m²



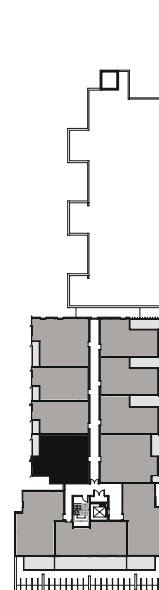
Wardrobe storage system

Dimensions and areas are approximate and are subject to change without notice. Internal measurements are taken from centreline of corridor and party walls and the external face of the outside wall. Prospective purchasers must rely on their own enquiries and should refer to the plans, terms and conditions contained in the contract of sale. Loose furniture, white goods and planters are not included.

AMIA

404

Level: 4
No Bedrooms: 2
No Bathrooms: 1
Floor Area: 64.1m²
Open Space: 3.8m²
Total Area: 67.9m²



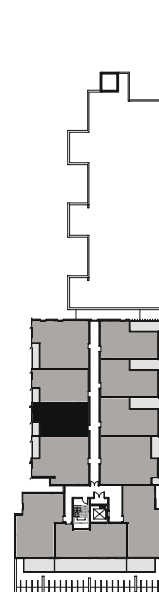
Wardrobe storage system

Dimensions and areas are approximate and are subject to change without notice. Internal measurements are taken from centreline of corridor and party walls and the external face of the outside wall. Prospective purchasers must rely on their own enquiries and should refer to the plans, terms and conditions contained in the contract of sale. Loose furniture, white goods and planters are not included.

AMIA

405

Level: 4
 No Bedrooms: 1+Study
 No Bathrooms: 1
 Floor Area: 46.1m²
 Open Space: 2.3m²
 Total Area: 48.4m²



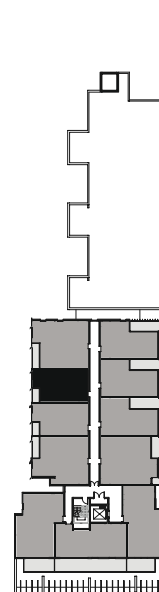
Wardrobe storage system

Dimensions and areas are approximate and are subject to change without notice. Internal measurements are taken from centreline of corridor and party walls and the external face of the outside wall. Prospective purchasers must rely on their own enquiries and should refer to the plans, terms and conditions contained in the contract of sale. Loose furniture, white goods and planters are not included.

AMIA

406

Level: 4
 No Bedrooms: 1+Study
 No Bathrooms: 1
 Floor Area: 46m²
 Open Space: 2.3m²
 Total Area: 48.3m²



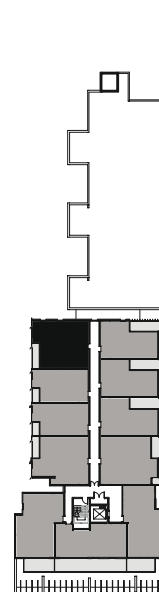
Wardrobe storage system

Dimensions and areas are approximate and are subject to change without notice. Internal measurements are taken from centreline of corridor and party walls and the external face of the outside wall. Prospective purchasers must rely on their own enquiries and should refer to the plans, terms and conditions contained in the contract of sale. Loose furniture, white goods and planters are not included.

AMIA

407

Level:	4
No Bedrooms:	2
No Bathrooms:	1
Floor Area:	65.6m ²
Open Space:	4.2m ²
Total Area:	69.8m ²



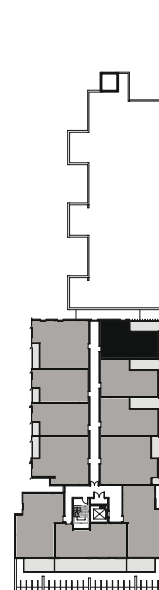
Wardrobe storage system

Dimensions and areas are approximate and are subject to change without notice. Internal measurements are taken from centreline of corridor and party walls and the external face of the outside wall. Prospective purchasers must rely on their own enquiries and should refer to the plans, terms and conditions contained in the contract of sale. Loose furniture, white goods and planters are not included.

AMIA

408

Level:	4
No Bedrooms:	1
No Bathrooms:	1
Floor Area:	50.5m ²
Open Space:	10.3m ²
Total Area:	60.8m ²



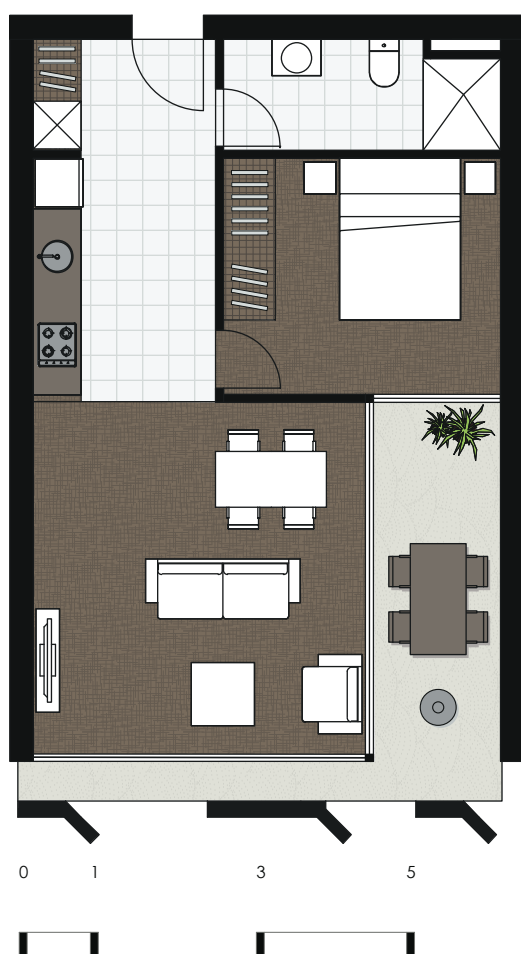
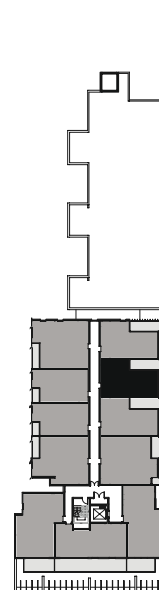
Wardrobe storage system

Dimensions and areas are approximate and are subject to change without notice. Internal measurements are taken from centreline of corridor and party walls and the external face of the outside wall. Prospective purchasers must rely on their own enquiries and should refer to the plans, terms and conditions contained in the contract of sale. Loose furniture, white goods and planters are not included.

AMIA

409

Level: 4
 No Bedrooms: 1
 No Bathrooms: 1
 Floor Area: 50.8m²
 Open Space: 9.5m²
 Total Area: 60.3m²



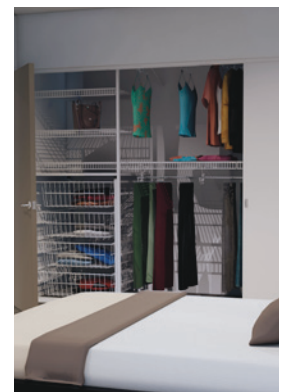
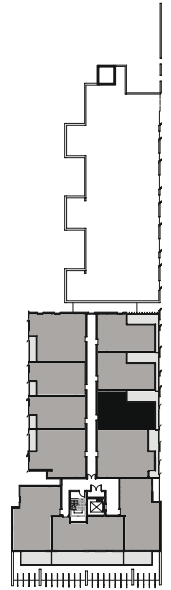
Wardrobe storage system

Dimensions and areas are approximate and are subject to change without notice. Internal measurements are taken from centreline of corridor and party walls and the external face of the outside wall. Prospective purchasers must rely on their own enquiries and should refer to the plans, terms and conditions contained in the contract of sale. Loose furniture, white goods and planters are not included.

AMIA

410

Level: 4
 No Bedrooms: 1
 No Bathrooms: 1
 Floor Area: 50m²
 Open Space: 9.8m²
 Total Area: 59.8m²



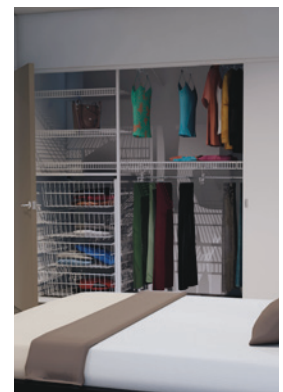
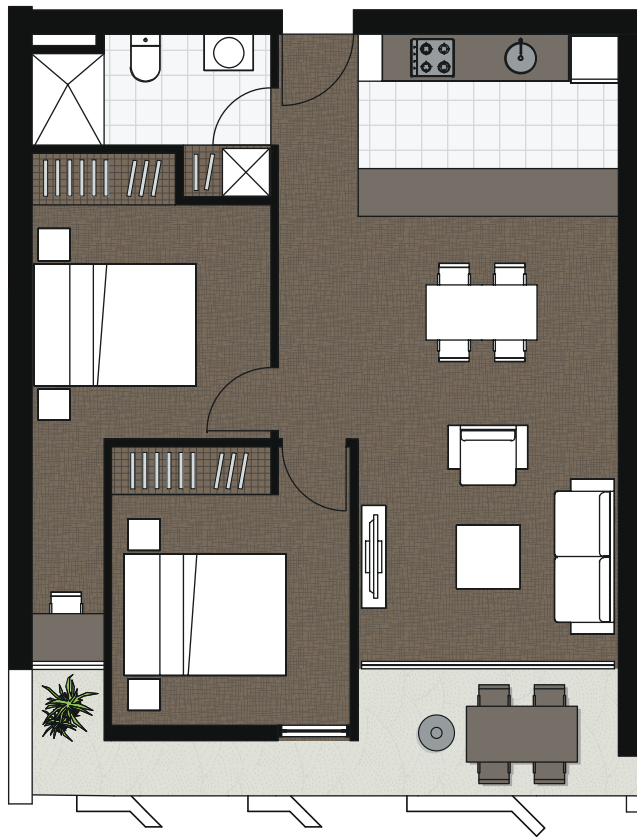
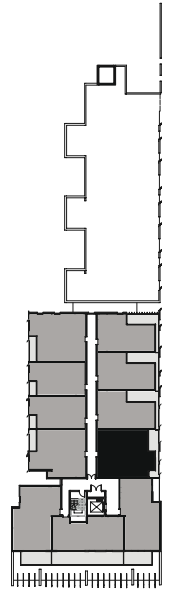
Wardrobe storage system

Dimensions and areas are approximate and are subject to change without notice. Internal measurements are taken from centreline of corridor and party walls and the external face of the outside wall. Prospective purchasers must rely on their own enquiries and should refer to the plans, terms and conditions contained in the contract of sale. Loose furniture, white goods and planters are not included.

AMIA

411

Level: 4
 No Bedrooms: 2
 No Bathrooms: 1
 Floor Area: 65.9m²
 Open Space: 8.3m²
 Total Area: 74.2m²



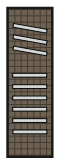
Wardrobe storage system

Dimensions and areas are approximate and are subject to change without notice. Internal measurements are taken from centreline of corridor and party walls and the external face of the outside wall. Prospective purchasers must rely on their own enquiries and should refer to the plans, terms and conditions contained in the contract of sale. Loose furniture, white goods and planters are not included.

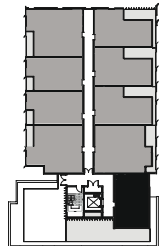
AMIA

501

Level: 5
No Bedrooms: 1
No Bathrooms: 1
Floor Area: 50.2m²
Open Space: 38.6m²
Total Area: 88.1m²



Wardrobe storage system



0 1 3 5

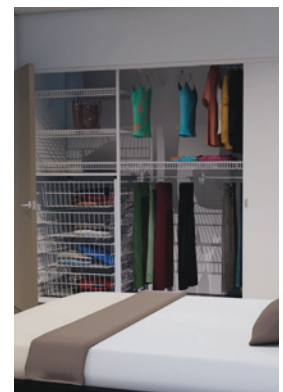
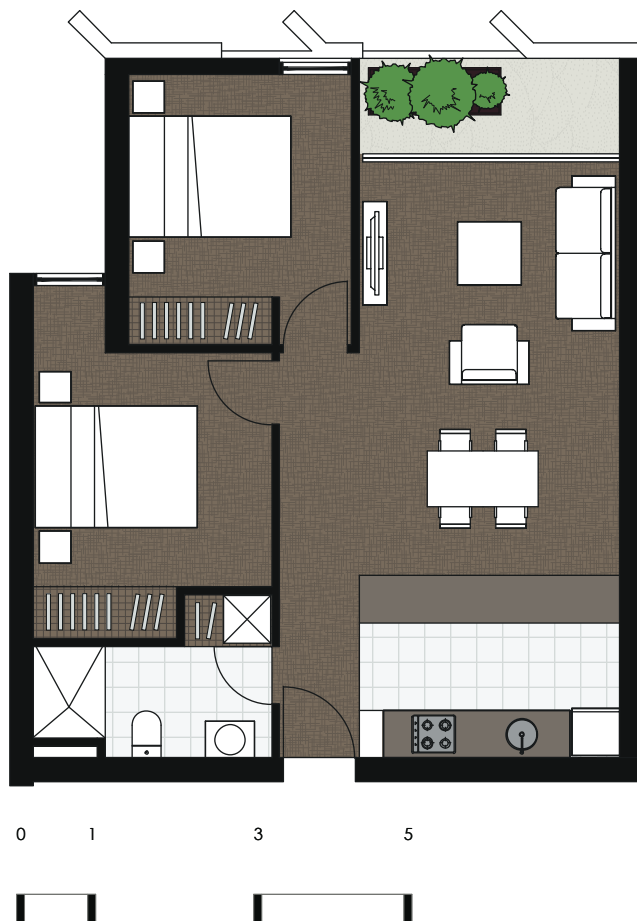
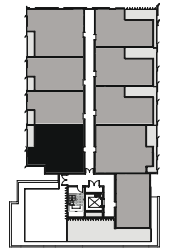


Dimensions and areas are approximate and are subject to change without notice. Internal measurements are taken from centreline of corridor and party walls and the external face of the outside wall. Prospective purchasers must rely on their own enquiries and should refer to the plans, terms and conditions contained in the contract of sale. Loose furniture, white goods and planters are not included.

AMIA

502

Level: 5
No Bedrooms: 2
No Bathrooms: 1
Floor Area: 64.1m²
Open Space: 3.8m²
Total Area: 67.9m²



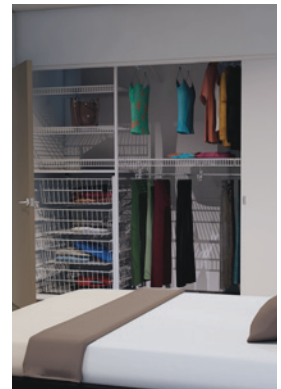
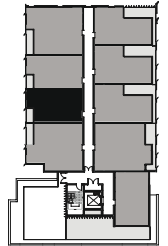
Wardrobe storage system

Dimensions and areas are approximate and are subject to change without notice. Internal measurements are taken from centreline of corridor and party walls and the external face of the outside wall. Prospective purchasers must rely on their own enquiries and should refer to the plans, terms and conditions contained in the contract of sale. Loose furniture, white goods and planters are not included.

AMIA

503

Level: 5
No Bedrooms: 1+Study
No Bathrooms: 1
Floor Area: 46m²
Open Space: 2.3m²
Total Area: 48.3m²



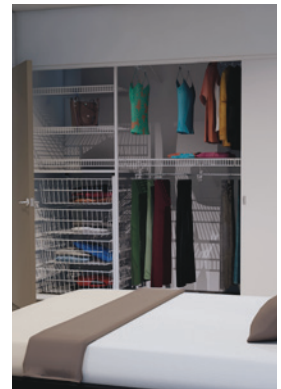
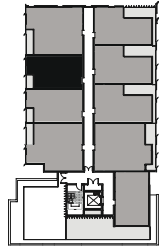
Wardrobe storage system

Dimensions and areas are approximate and are subject to change without notice. Internal measurements are taken from centreline of corridor and party walls and the external face of the outside wall. Prospective purchasers must rely on their own enquiries and should refer to the plans, terms and conditions contained in the contract of sale. Loose furniture, white goods and planters are not included.

AMIA

504

Level: 5
 No Bedrooms: 1+Study
 No Bathrooms: 1
 Floor Area: 45.9m²
 Open Space: 2.3m²
 Total Area: 48.2m²



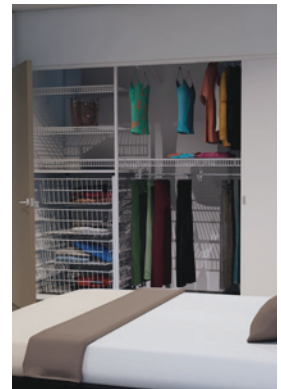
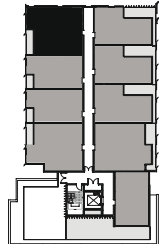
Wardrobe storage system

Dimensions and areas are approximate and are subject to change without notice. Internal measurements are taken from centreline of corridor and party walls and the external face of the outside wall. Prospective purchasers must rely on their own enquiries and should refer to the plans, terms and conditions contained in the contract of sale. Loose furniture, white goods and planters are not included.

AMIA

505

Level: 5
No Bedrooms: 2
No Bathrooms: 1
Floor Area: 65.6m²
Open Space: 4.4m²
Total Area: 70m²



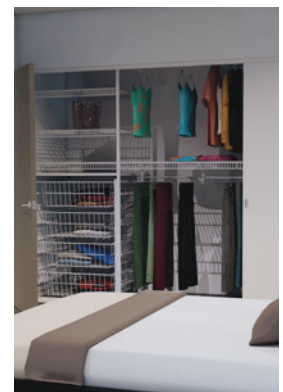
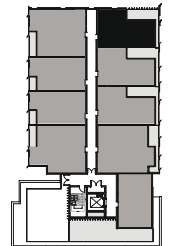
Wardrobe storage system

Dimensions and areas are approximate and are subject to change without notice. Internal measurements are taken from centreline of corridor and party walls and the external face of the outside wall. Prospective purchasers must rely on their own enquiries and should refer to the plans, terms and conditions contained in the contract of sale. Loose furniture, white goods and planters are not included.

AMIA

506

Level: 5
 No Bedrooms: 1
 No Bathrooms: 1
 Floor Area: 50.6m²
 Open Space: 10.3m²
 Total Area: 60.9m²



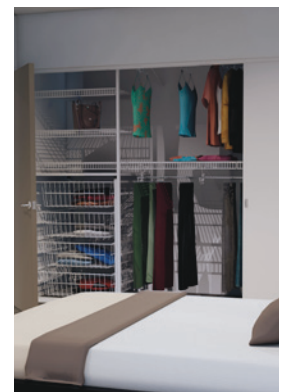
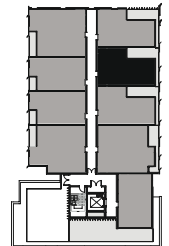
Wardrobe storage system

Dimensions and areas are approximate and are subject to change without notice. Internal measurements are taken from centreline of corridor and party walls and the external face of the outside wall. Prospective purchasers must rely on their own enquiries and should refer to the plans, terms and conditions contained in the contract of sale. Loose furniture, white goods and planters are not included.

AMIA

507

Level: 5
 No Bedrooms: 1
 No Bathrooms: 1
 Floor Area: 50m²
 Open Space: 9.5m²
 Total Area: 59.5m²



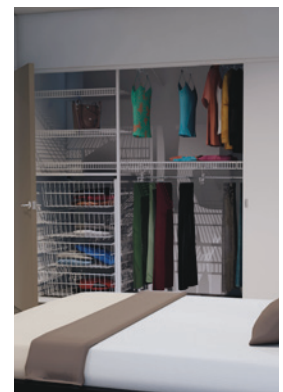
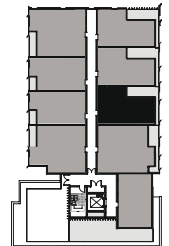
Wardrobe storage system

Dimensions and areas are approximate and are subject to change without notice. Internal measurements are taken from centreline of corridor and party walls and the external face of the outside wall. Prospective purchasers must rely on their own enquiries and should refer to the plans, terms and conditions contained in the contract of sale. Loose furniture, white goods and planters are not included.

AMIA

508

Level:	5
No Bedrooms:	1
No Bathrooms:	1
Floor Area:	50m ²
Open Space:	9.8m ²
Total Area:	59.8m ²



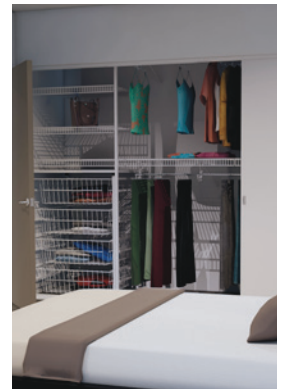
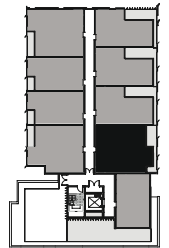
Wardrobe storage system

Dimensions and areas are approximate and are subject to change without notice. Internal measurements are taken from centreline of corridor and party walls and the external face of the outside wall. Prospective purchasers must rely on their own enquiries and should refer to the plans, terms and conditions contained in the contract of sale. Loose furniture, white goods and planters are not included.

AMIA

509

Level: 5
No Bedrooms: 2
No Bathrooms: 1
Floor Area: 67m²
Open Space: 9.1m²
Total Area: 76.1m²



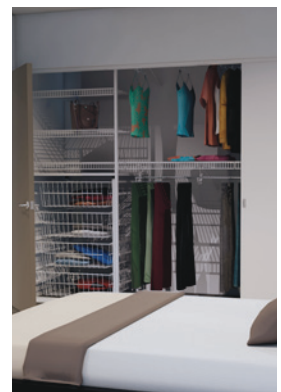
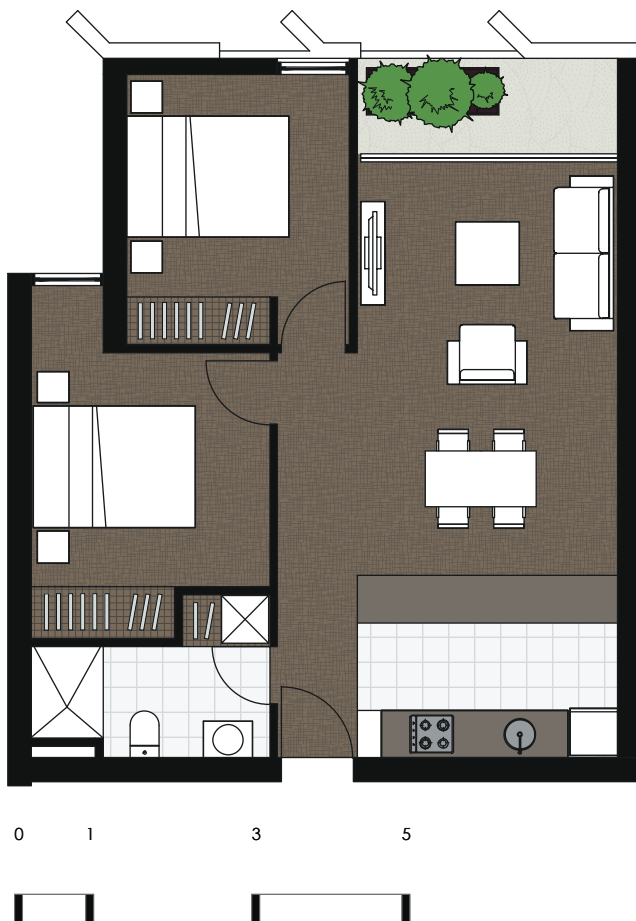
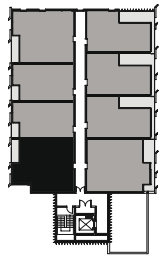
Wardrobe storage system

Dimensions and areas are approximate and are subject to change without notice. Internal measurements are taken from centreline of corridor and party walls and the external face of the outside wall. Prospective purchasers must rely on their own enquiries and should refer to the plans, terms and conditions contained in the contract of sale. Loose furniture, white goods and planters are not included.

AMIA

601

Level: 6
 No Bedrooms: 2
 No Bathrooms: 1
 Floor Area: 62.4m²
 Open Space: 3.8m²
 Total Area: 66.2m²



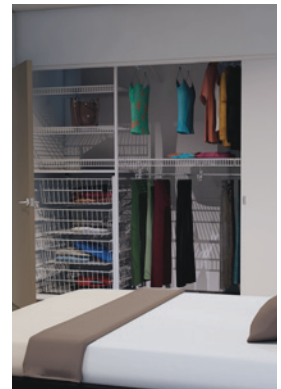
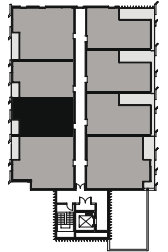
Wardrobe storage system

Dimensions and areas are approximate and are subject to change without notice. Internal measurements are taken from centreline of corridor and party walls and the external face of the outside wall. Prospective purchasers must rely on their own enquiries and should refer to the plans, terms and conditions contained in the contract of sale. Loose furniture, white goods and planters are not included.

AMIA

602

Level: 6
No Bedrooms: 1+Study
No Bathrooms: 1
Floor Area: 45.4m²
Open Space: 2.3m²
Total Area: 47.7m²



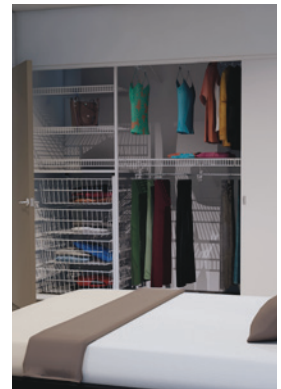
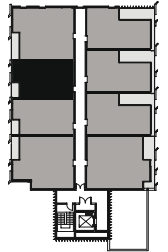
Wardrobe storage system

Dimensions and areas are approximate and are subject to change without notice. Internal measurements are taken from centreline of corridor and party walls and the external face of the outside wall. Prospective purchasers must rely on their own enquiries and should refer to the plans, terms and conditions contained in the contract of sale. Loose furniture, white goods and planters are not included.

AMIA

603

Level: 6
No Bedrooms: 1+Study
No Bathrooms: 1
Floor Area: 45.9m²
Open Space: 2.3m²
Total Area: 48.2m²



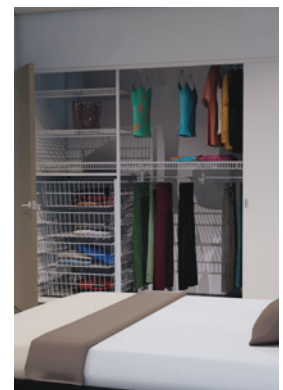
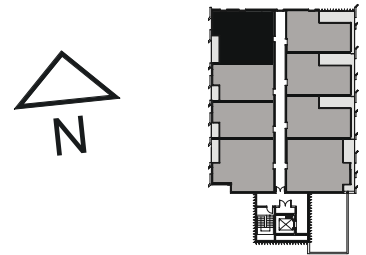
Wardrobe storage system

Dimensions and areas are approximate and are subject to change without notice. Internal measurements are taken from centreline of corridor and party walls and the external face of the outside wall. Prospective purchasers must rely on their own enquiries and should refer to the plans, terms and conditions contained in the contract of sale. Loose furniture, white goods and planters are not included.

AMIA

604

Level:	6
No Bedrooms:	2
No Bathrooms:	1
Floor Area:	65.5m ²
Open Space:	4.2m ²
Total Area:	69.7m ²



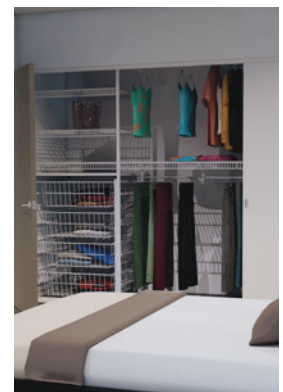
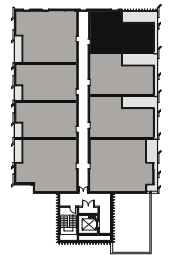
Wardrobe storage system

Dimensions and areas are approximate and are subject to change without notice. Internal measurements are taken from centreline of corridor and party walls and the external face of the outside wall. Prospective purchasers must rely on their own enquiries and should refer to the plans, terms and conditions contained in the contract of sale. Loose furniture, white goods and planters are not included.

AMIA

605

Level: 6
 No Bedrooms: 1
 No Bathrooms: 1
 Floor Area: 50.5m²
 Open Space: 10.3m²
 Total Area: 60.8m²



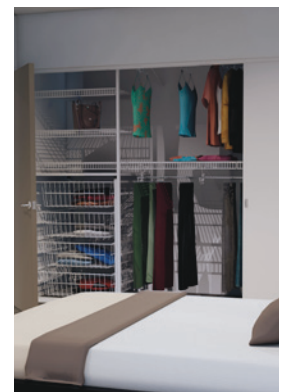
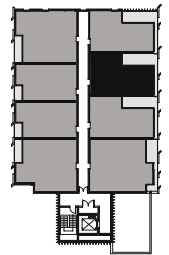
Wardrobe storage system

Dimensions and areas are approximate and are subject to change without notice. Internal measurements are taken from centreline of corridor and party walls and the external face of the outside wall. Prospective purchasers must rely on their own enquiries and should refer to the plans, terms and conditions contained in the contract of sale. Loose furniture, white goods and planters are not included.

AMIA

606

Level: 6
 No Bedrooms: 1
 No Bathrooms: 1
 Floor Area: 50m²
 Open Space: 9.5m²
 Total Area: 59.5m²



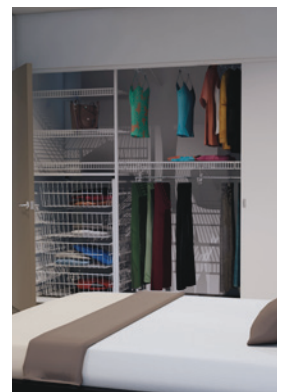
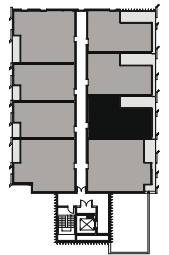
Wardrobe storage system

Dimensions and areas are approximate and are subject to change without notice. Internal measurements are taken from centreline of corridor and party walls and the external face of the outside wall. Prospective purchasers must rely on their own enquiries and should refer to the plans, terms and conditions contained in the contract of sale. Loose furniture, white goods and planters are not included.

AMIA

607

Level:	6
No Bedrooms:	1
No Bathrooms:	1
Floor Area:	50m ²
Open Space:	9.8m ²
Total Area:	59.8m ²



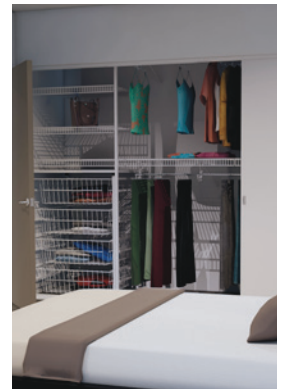
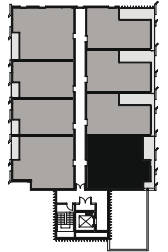
Wardrobe storage system

Dimensions and areas are approximate and are subject to change without notice. Internal measurements are taken from centreline of corridor and party walls and the external face of the outside wall. Prospective purchasers must rely on their own enquiries and should refer to the plans, terms and conditions contained in the contract of sale. Loose furniture, white goods and planters are not included.

AMIA

608

Level: 6
 No Bedrooms: 2
 No Bathrooms: 1
 Floor Area: 67.4m²
 Open Space: 9.6m²
 Total Area: 77m²



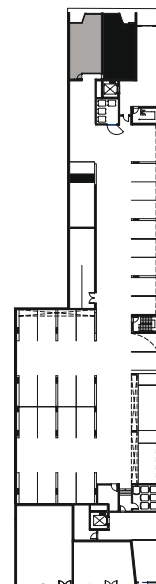
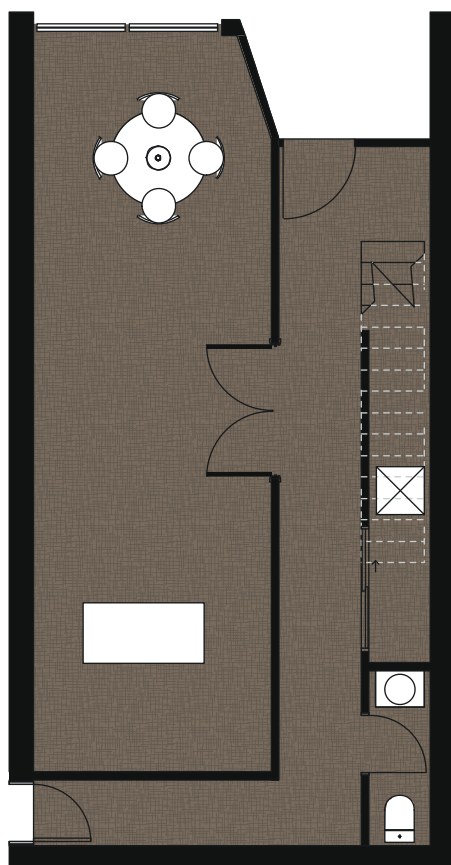
Wardrobe storage system

Dimensions and areas are approximate and are subject to change without notice. Internal measurements are taken from centreline of corridor and party walls and the external face of the outside wall. Prospective purchasers must rely on their own enquiries and should refer to the plans, terms and conditions contained in the contract of sale. Loose furniture, white goods and planters are not included.

AMIA

1 BG

Level: n/a
Accommodation: Town H
No Bathrooms: n/a
Internal: 160.1m²
Open Space: 7.4m²
Total Area: 167.5m²

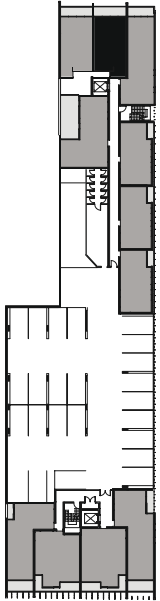
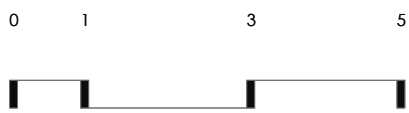
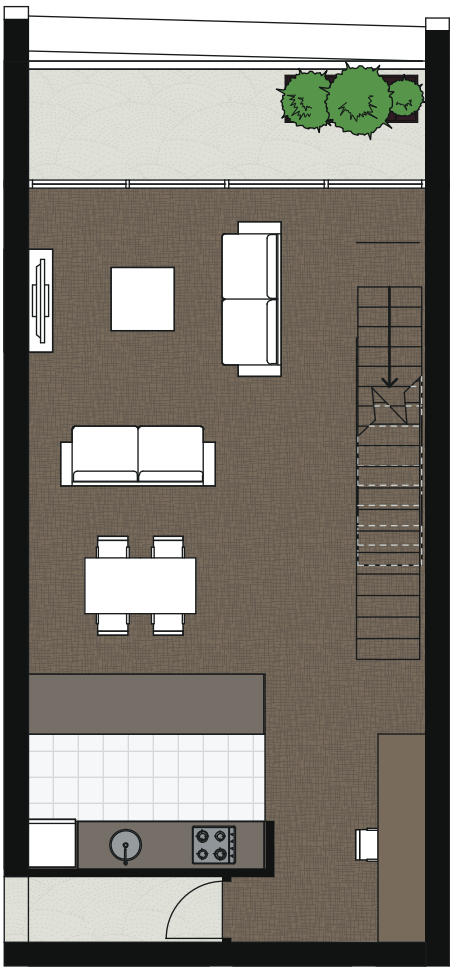


Dimensions and areas are approximate and are subject to change without notice. Internal measurements are taken from centreline of corridor and party walls and the external face of the outside wall. Prospective purchasers must rely on their own enquiries and should refer to the plans, terms and conditions contained in the contract of sale. Loose furniture, white goods and planters are not included.

AMIA

1 BF

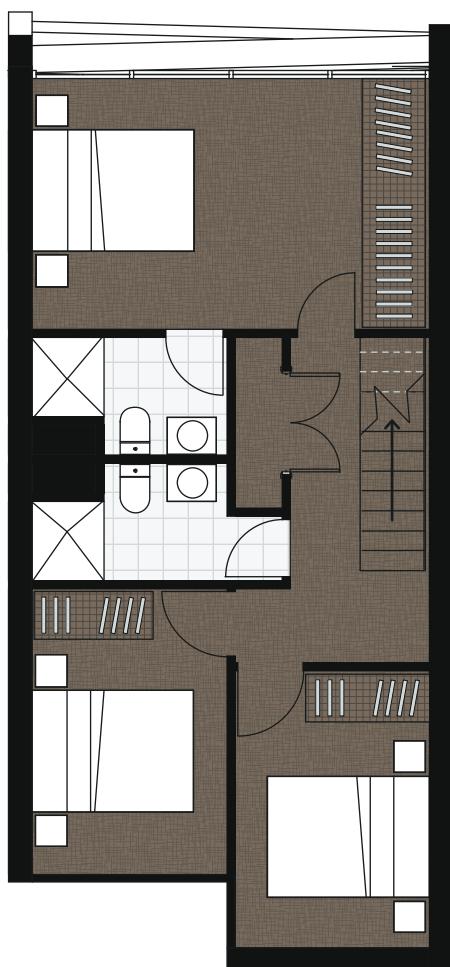
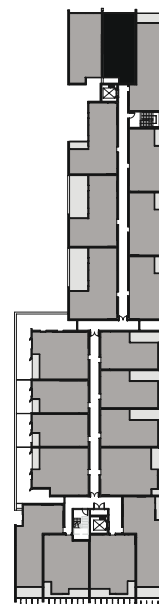
Level: n/a
Accommodation: Town H
No Bathrooms: n/a
Internal: 160.1m²
Open Space: 7.4m²
Total Area: 167.5m²



Dimensions and areas are approximate and are subject to change without notice. Internal measurements are taken from centreline of corridor and party walls and the external face of the outside wall. Prospective purchasers must rely on their own enquiries and should refer to the plans, terms and conditions contained in the contract of sale. Loose furniture, white goods and planters are not included.

1 BS

Level: n/a
Accommodation: Town H
No Bathrooms: n/a
Internal: 160.1m²
Open Space: 7.4m²
Total Area: 167.5m²



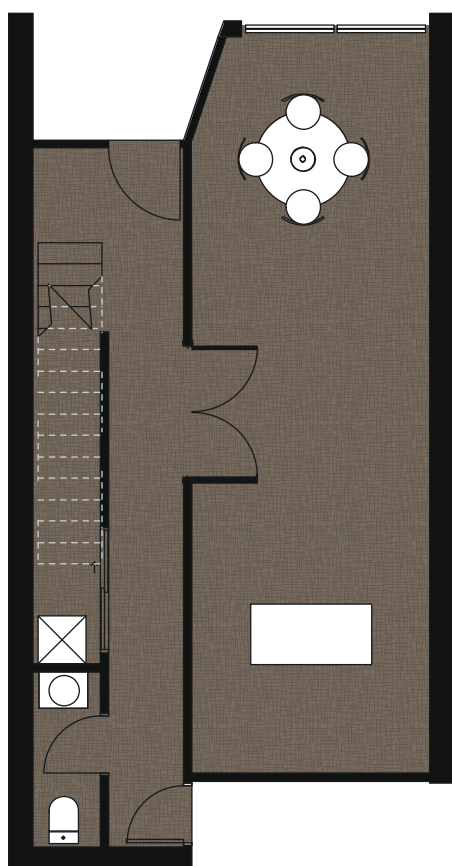
Wardrobe storage system

Dimensions and areas are approximate and are subject to change without notice. Internal measurements are taken from centreline of corridor and party walls and the external face of the outside wall. Prospective purchasers must rely on their own enquiries and should refer to the plans, terms and conditions contained in the contract of sale. Loose furniture, white goods and planters are not included.

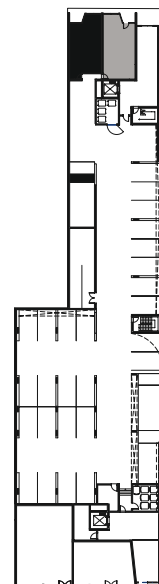
AMIA

1 AG

Level:	n/a
Accommodation:	Town H
No Bathrooms:	n/a
Internal:	159.5m ²
Open Space:	8m ²
Total Area:	167.5m ²



0 1 3 5

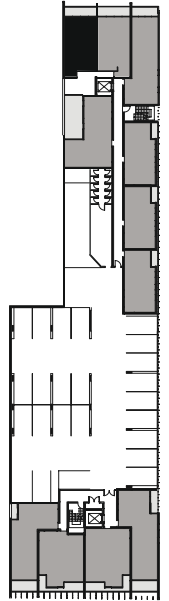
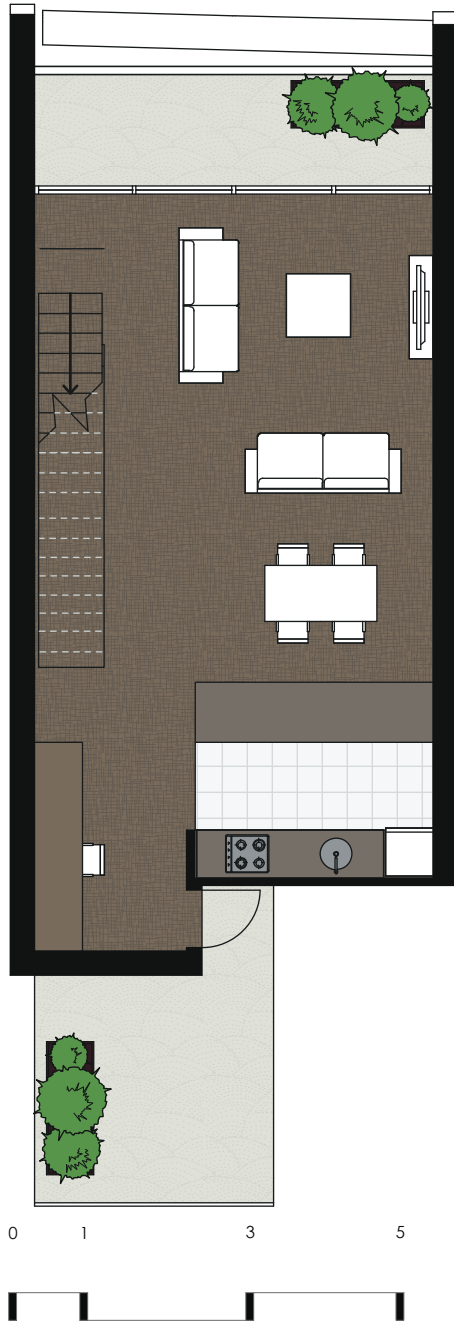


Dimensions and areas are approximate and are subject to change without notice. Internal measurements are taken from centreline of corridor and party walls and the external face of the outside wall. Prospective purchasers must rely on their own enquiries and should refer to the plans, terms and conditions contained in the contract of sale. Loose furniture, white goods and planters are not included.

AMIA

1AF

Level: n/a
Accommodation: Town H
No Bathrooms: n/a
Internal: 159.5m²
Open Space: 8m²
Total Area: 167.5m²

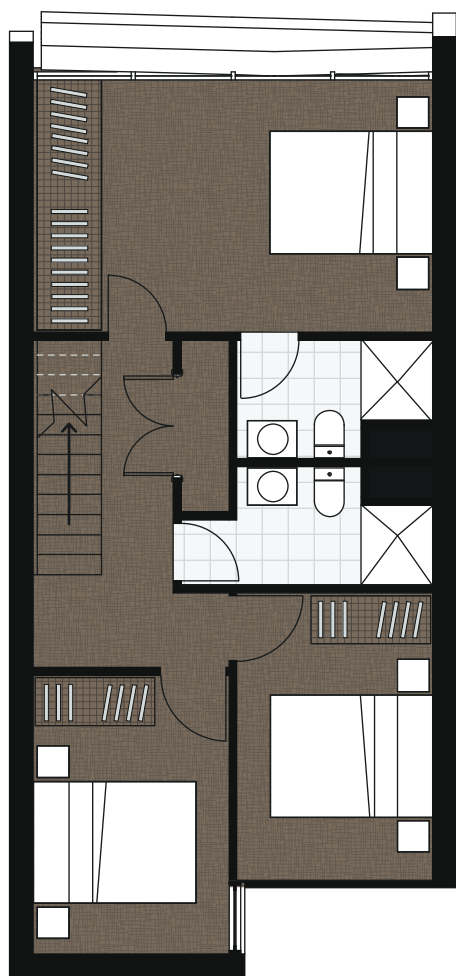


Dimensions and areas are approximate and are subject to change without notice. Internal measurements are taken from centreline of corridor and party walls and the external face of the outside wall. Prospective purchasers must rely on their own enquiries and should refer to the plans, terms and conditions contained in the contract of sale. Loose furniture, white goods and planters are not included.

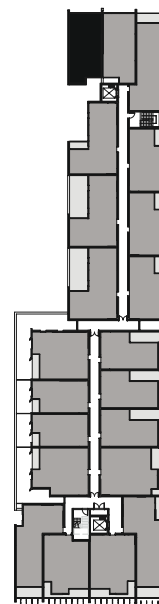
AMIA

1 AS

Level: n/a
Accommodation: Town H
No Bathrooms: n/a
Internal: 159.5m²
Open Space: 8m²
Total Area: 167.5m²



0 1 3 5



Wardrobe storage system

Dimensions and areas are approximate and are subject to change without notice. Internal measurements are taken from centreline of corridor and party walls and the external face of the outside wall. Prospective purchasers must rely on their own enquiries and should refer to the plans, terms and conditions contained in the contract of sale. Loose furniture, white goods and planters are not included.

AMIA